

# KISSIMMEE. ICH-101

Traditional



### SPECIFICATIONS

SQ. FT.	1607
BEDROOMS:	3
BATHROOMS:	2
LEVELS:	1

### OPTIONAL FEATURES

- ☒ Green Certification
- ☒ Energy Star

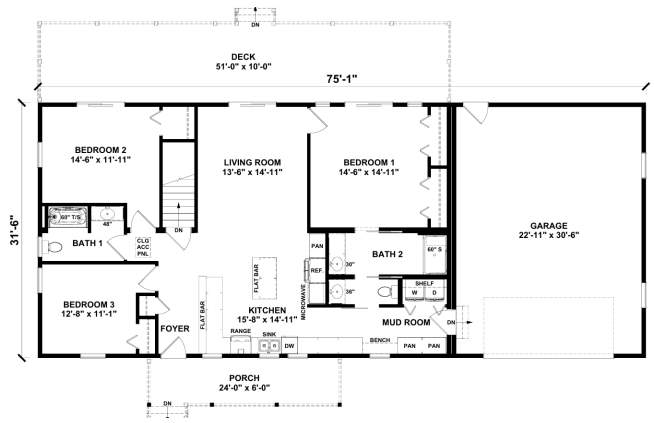
The Kissimmee is designed to provide a comfortable and stylish living environment, and has a spacious and well-designed layout that combines functionality with a modern aesthetic.

The main level is designed with an open-concept layout that encourages seamless flow between the living spaces. The master suite is a luxurious retreat, featuring a spacious bedroom, a large walk-in closet, and an en-suite bathroom with dual vanities, a soaking tub, and a separate shower. This space is designed for relaxation and comfort, offering a peaceful escape from the rest of the home. Adjacent to the kitchen and master suite is a convenient mudroom with access to the attached garage, providing an ideal space for organization.

Upgrades Included: Formica 180FX countertop, painted cabinets, LVP throughout

Onsite by Others: garage, porch and deck. Appliances not included.

### FIRST FLOOR



YOUR  
NEW HOME  
CONSULTANT

Hi, I'm , your personal Modular Home Consultant

I would be happy to help you with any questions you may have. You can contact me on my direct number at or email me at .