

MALABAR. ICH-099

Traditional



SPECIFICATIONS

SQ. FT.	1100
BEDROOMS:	2
BATHROOMS:	2
LEVELS:	1

OPTIONAL FEATURES

- ☒ Green Certification
- ☒ Energy Star

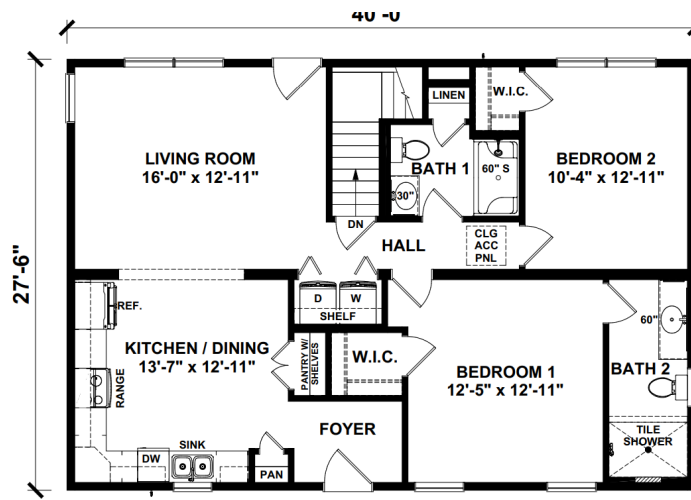
The Malabar offers a spacious and functional design, ideal for modern living. It features a generous floor plan perfect for entertaining or family gatherings.

The Malabar also includes options for customization, allowing homeowners to tailor the design to their specific needs and preferences. With its blend of style, comfort, and practicality, the Malabar home plan is a great choice for those seeking a versatile and stylish living space.

Upgrades Included: Master Bath Tiled Shower, All vinyl plank flooring

Onsite by Others: Heat, Water Heater

FIRST FLOOR



YOUR
NEW HOME
CONSULTANT

Hi, I'm , your personal Modular Home Consultant

I would be happy to help you with any questions you may have. You can contact me on my direct number at or email me at .