

# LAKE HELEN. ICH-092

Traditional



### SPECIFICATIONS

SQ. FT.	2838
BEDROOMS:	3
BATHROOMS:	2.5
LEVELS:	1.5

### OPTIONAL FEATURES

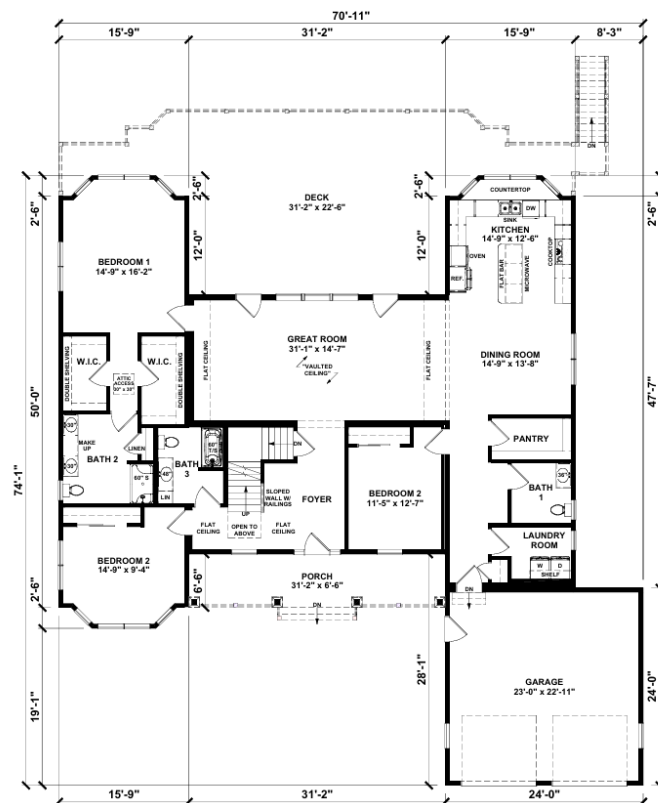
- ☒ Green Certification
- ☒ Energy Star

One of the standout features of the Lake Helen is its emphasis on natural light. Large windows are strategically placed throughout the home to maximize sunlight, creating a bright and inviting atmosphere. The home also includes a utility room that offers convenience for laundry and extra storage needs, enhancing the overall functionality of the space.

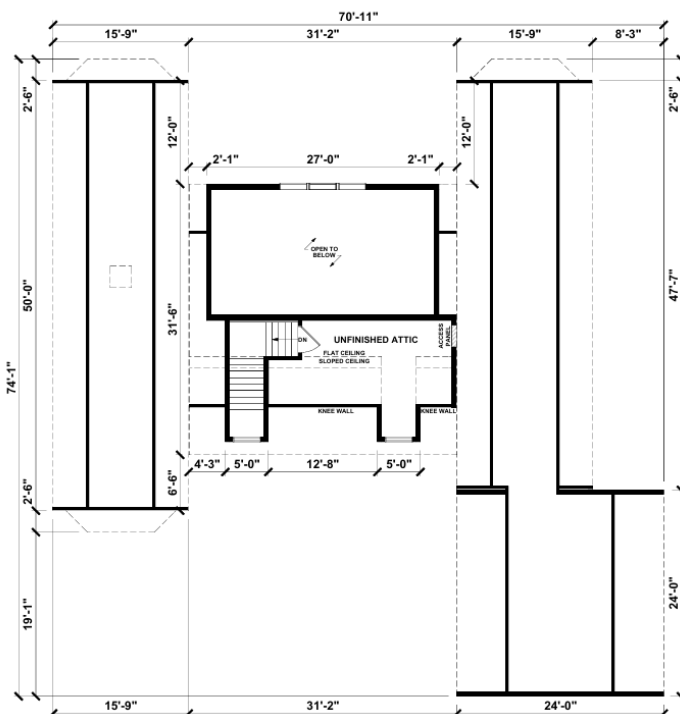
Upgrades Included: Ceramic tile flooring in bathrooms, painted cabinets, quartz countertop, oak stairs with white risers, tiled bathrooms showers in 2 bathrooms.

On Site by Others: Appliances not included, garage onsite by others, porch and deck onsite by others, all flooring except for bathrooms is onsite by others.

### FIRST FLOOR



## SUGGESTED SECOND FLOOR



YOUR  
NEW HOME  
CONSULTANT

Hi, I'm , your personal Modular Home Consultant

I would be happy to help you with any questions you may have. You can contact me on my direct number at or email me at .