

WINTER GARDENS. ICH-091

Traditional



SPECIFICATIONS

SQ. FT.	2875
BEDROOMS:	2
BATHROOMS:	2
LEVELS:	1.5

OPTIONAL FEATURES

- ☒ Green Certification
- ☒ Energy Star

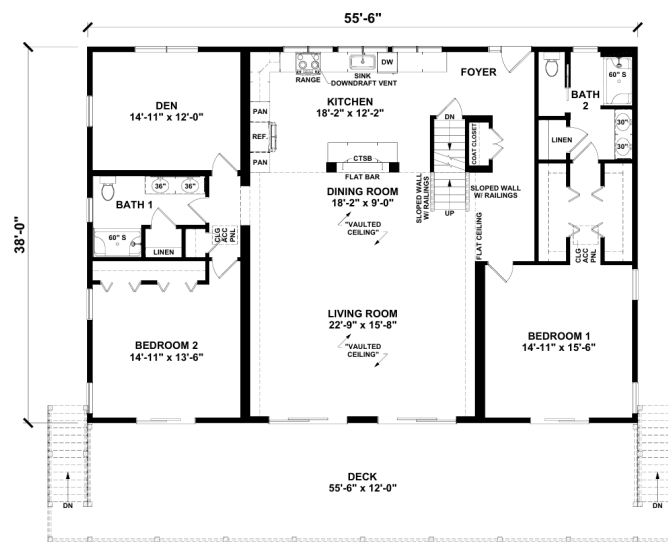
One of the standout features of the Winter Gardens design is its emphasis on natural light, with large windows that illuminate the interior and create a warm, inviting atmosphere. The home also includes a utility room for laundry and additional storage, enhancing its functionality.

Overall, the Winter Gardens home plan is ideal for families or individuals looking for a blend of modern design and practical living spaces.

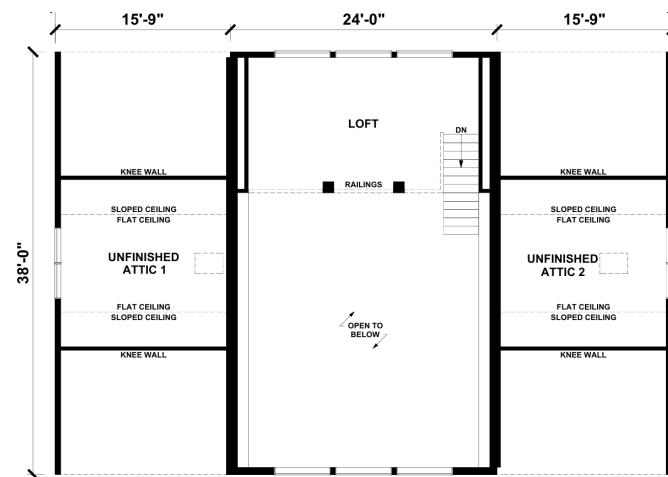
Upgrades Included: LVP flooring throughout, ceramic tile in bathrooms, hanstone quartz countertop, painted cabinets, stairs with oak treads and white risers.

On Site by Others: Deck, appliances not included.

FIRST FLOOR



SUGGESTED SECOND FLOOR



YOUR
NEW HOME
CONSULTANT



Hi, I'm Chris Runyan, your personal Modular Home Consultant

I would be happy to help you with any questions you may have. You can contact me on my direct number at **(877) 419-9858** or email me at chris.runyan@impresamodular.com.