

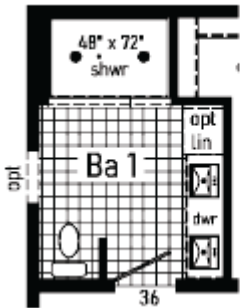
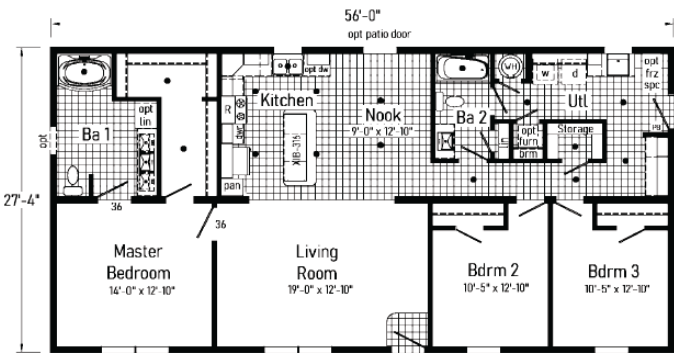


SPECIFICATIONS

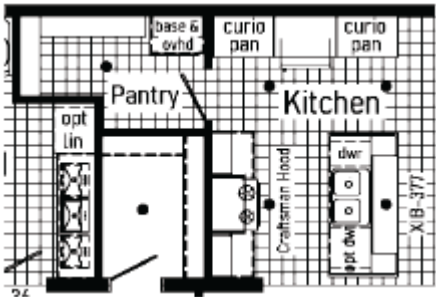
SQ. FT.	1531
BEDROOMS:	3
BATHROOMS:	2
LEVELS:	1

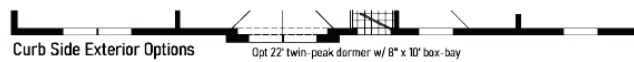
OPTIONAL FEATURES

- ☒ Green Certification ☒ Energy Star



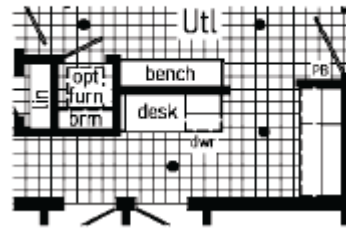
Optional
Double Lav
Base with
Drawers





Optional Desk & Bench

Replaces Storage Closet



YOUR
NEW HOME
CONSULTANT



Hi, I'm Justin Bryant, your personal Modular Home Consultant

I would be happy to help you with any questions you may have. You can contact me on my direct number at **(877) 410-6334** or email me at

justin.bryant@impresamodular.com.