

Narrow LotTraditional



## SPECIFICATIONS

<b>SQ. FT.</b>	1403
<b>BEDROOMS:</b>	3
<b>BATHROOMS:</b>	2
<b>LEVELS:</b>	1

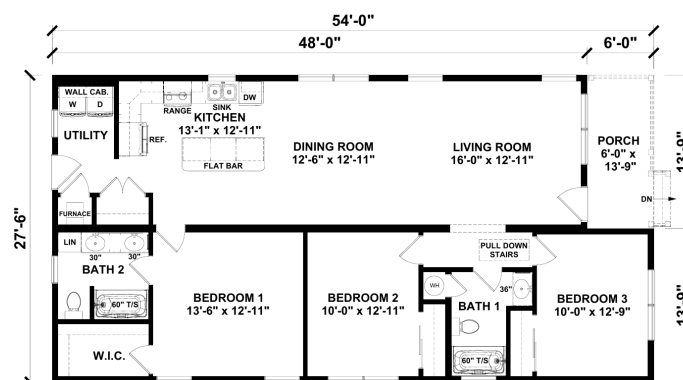
## OPTIONAL FEATURES

☒ Green Certification    ☒ Energy Star

Upgrades Included: Porch included, LVP flooring throughout, Formica countertop, natural cabinets, includes electric up flow furnace with AC coil.

Onsite by Others: appliances not included.

## FIRST FLOOR



YOUR  
NEW HOME  
CONSULTANT



**Hi, I'm Justin Bryant, your personal Modular Home Consultant**

I would be happy to help you with any questions you may have. You can contact me on my direct number at **(877) 410-6334** or email me at [justin.bryant@impresamodular.com](mailto:justin.bryant@impresamodular.com).