

# DAVENPORT. ICH-078

Traditional



### SPECIFICATIONS

SQ. FT.	1579
BEDROOMS:	3
BATHROOMS:	2.5
LEVELS:	2

### OPTIONAL FEATURES

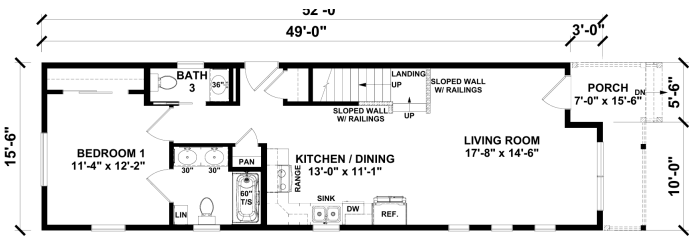
- ☒ Green Certification
- ☒ Energy Star

The Davenport's grand foyer leads into an expansive great room that serves as the heart of the home. Large windows bathe the room in natural light, enhancing the sense of openness and connection to the outdoors. This plan includes a luxurious master suite with a spa-like ensuite bathroom and a generous walk-in closet. Three additional bedrooms provide ample space for family members or guests, each designed with comfort and privacy in mind.

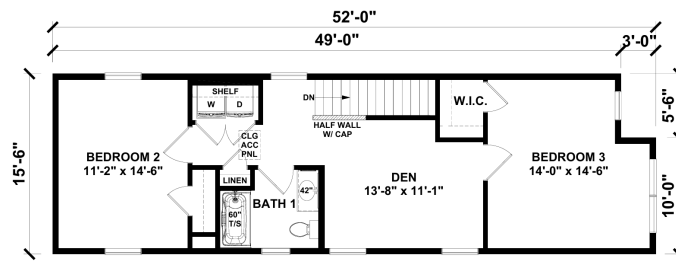
Upgrades Included: LVP Flooring throughout, Formica countertop, natural cabinets, porch included, includes electric downflow furnace with AC coil.

Onsite by Others: Appliances

### FIRST FLOOR



### SECOND FLOOR



YOUR  
NEW HOME  
CONSULTANT

## Hi, I'm , your personal Modular Home Consultant

I would be happy to help you with any questions you may have. You can contact me on my direct number at or email me at .