

LABELLE . ICH-076

Traditional



SPECIFICATIONS

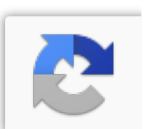
SQ. FT.	2040
BEDROOMS:	4
BATHROOMS:	2.5
LEVELS:	2

OPTIONAL FEATURES

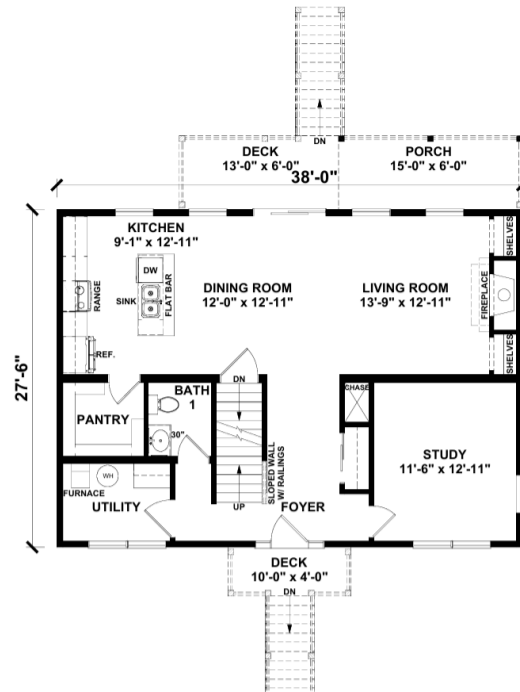
- Green Certification
- Energy Star

Upgrades Included: Standard flooring sheet vinyl/carpeting, Formica countertop, fireplace, painted cabinets'

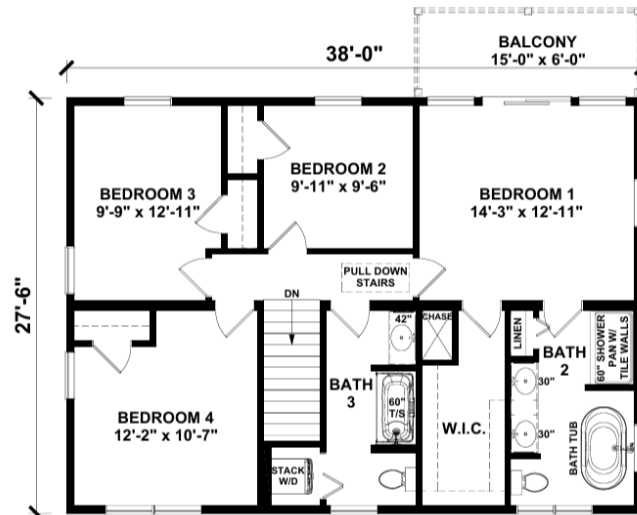
Onsite by Others: Appliances not included, decks and porches onsite by others



FIRST FLOOR



SECOND FLOOR



YOUR
NEW HOME
CONSULTANT



Hi, I'm , your personal Modular Home Consultant

I would be happy to help you with any questions you may have. You can contact me on my direct number at or email me at .

