

QUINCY . ICH-068

Traditional



SPECIFICATIONS

SQ. FT.	1811
BEDROOMS:	3
BATHROOMS:	2.5
LEVELS:	2

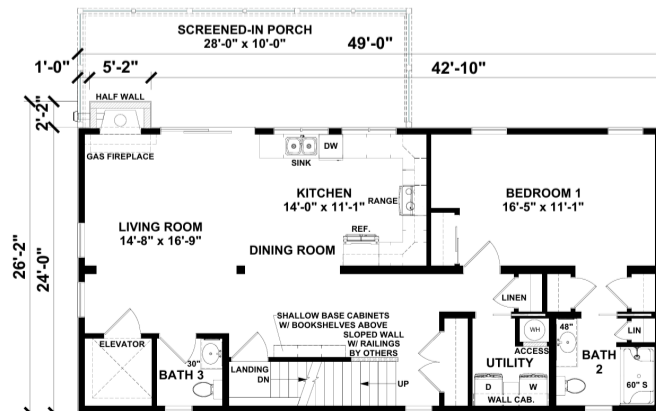
OPTIONAL FEATURES

- Green Certification
- Energy Star

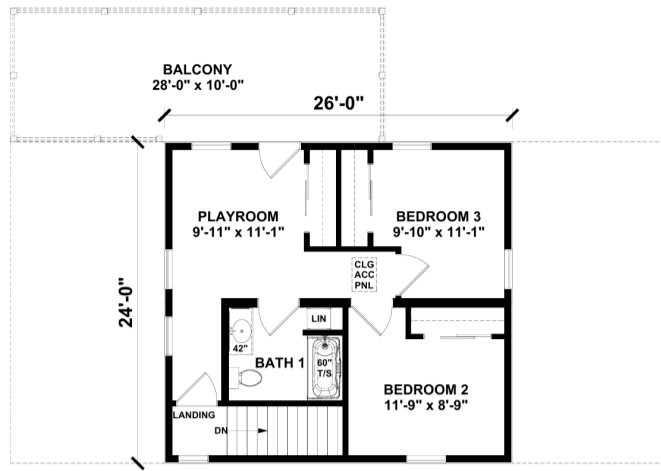
Upgrades Included: LVP flooring throughout, ceramic tile in bathrooms, quartz countertops, painted cabinets, stairs with oak treads and white risers.

Onsite by Others: appliances not included, elevator not included, lowest level by others, screened in porch by others.

FIRST FLOOR



SECOND FLOOR



**YOUR
NEW HOME
CONSULTANT**



Hi, I'm , your personal Modular Home Consultant

I would be happy to help you with any questions you may have. You can contact me on my direct number at or email me at .

