

FORT WHITE. ICH-079

Narrow LotTraditional



SPECIFICATIONS

SQ. FT.	1459
BEDROOMS:	2
BATHROOMS:	2
LEVELS:	1.5

OPTIONAL FEATURES

- ☒ Green Certification
- ☒ Energy Star

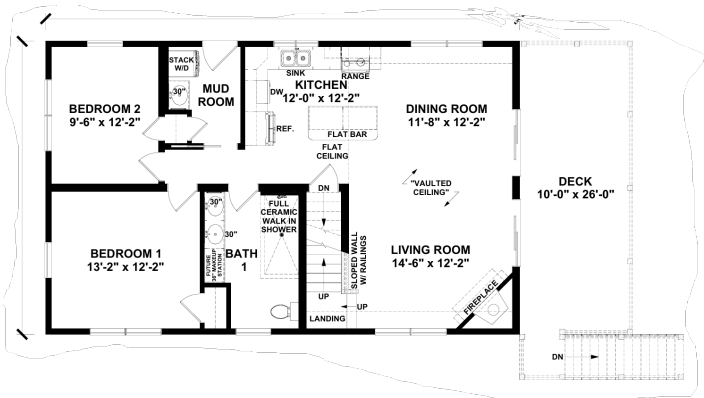
The Fort White plan is designed to offer modern comfort and convenience with a focus on open living spaces and contemporary design elements.

This plan has lots of light with its trapezoid windows. You have a unfinished second level that you can put and extra bedroom or office. So many possibilities with this plan.

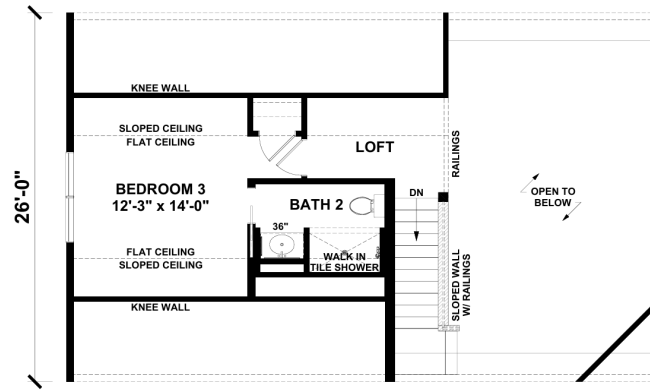
Upgrades Included: LVP throughout, ceramic tile in mudroom and bathroom, red oak stairs with white risers, painted cabinets, quartz countertop.

Onsite by Others: Appliances not included, deck onsite by others, gable trim not included

FIRST FLOOR



SUGGESTED SECOND FLOOR



YOUR
NEW HOME
CONSULTANT



Hi, I'm David Lipka, your personal Modular Home Consultant

I would be happy to help you with any questions you may have. You can contact me on my direct number at **(877) 419-1478** or email me at David.Lipka@impresamodular.com.