



SPECIFICATIONS

SQ. FT.	1040
BEDROOMS:	2
BATHROOMS:	2
LEVELS:	1

OPTIONAL FEATURES

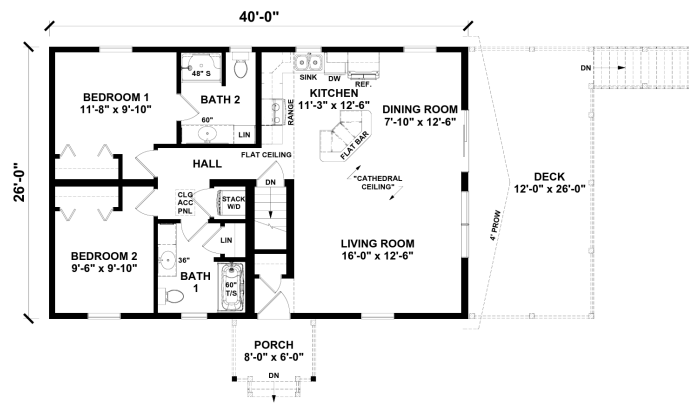
- ☒ Green Certification
- ☒ Energy Star

The Ocoee is a charming modular home design that seamlessly blends modern aesthetics with cozy comfort. As you approach the house, its inviting porch welcomes you, hinting at the warmth and relaxation awaiting inside.

Entering through the front door, you step into a spacious living area that serves as the heart of the home. Large windows flood the room with natural light, illuminating the elegant hardwood floors and accentuating the airy ambiance. The open floor plan effortlessly connects the living space to the kitchen and dining area, promoting fluid interaction and a sense of togetherness.

Upgrades Included: LVP flooring throughout, quartz countertop, painted cabinets, deluxe color siding, electric baseboard heating.

Onsite by Others: Wood ceiling, deck, stone for foundation. Appliances not included.



YOUR
NEW HOME
CONSULTANT



Hi, I'm Justin Bryant, your personal Modular Home Consultant

I would be happy to help you with any questions you may have. You can contact me on my direct number at **(877) 410-6334** or email me at

justin.bryant@impresamodular.com.