

# WOODVILLE. ICH-051

Traditional



## SPECIFICATIONS

SQ. FT.	2040
BEDROOMS:	3
BATHROOMS:	2
LEVELS:	1

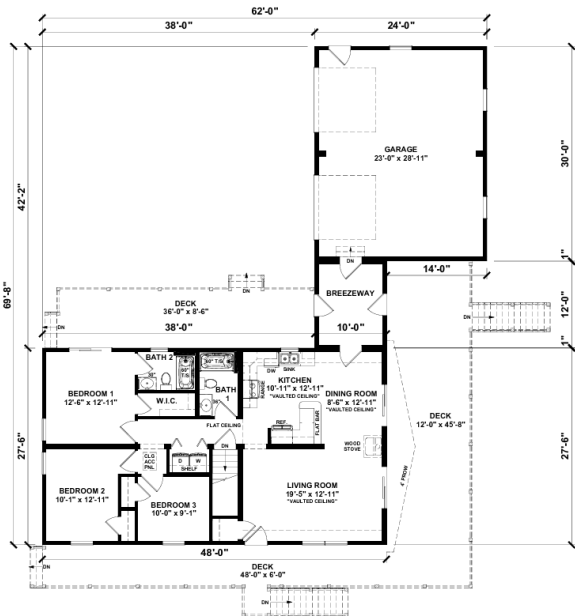
## OPTIONAL FEATURES

- ☒ Green Certification
- ☒ Energy Star
- ☒ Garage
- Included

Upgrades Included: Garage included, quartz countertop, LVP throughout, ceramic tile in bathrooms, painted cabinets in kitchen and bathrooms.

Onsite by Others: Appliances not included, breezeway onsite by others, decks onsite by others.

## FIRST FLOOR





**Hi, I'm , your personal Modular Home Consultant**

I would be happy to help you with any questions you may have. You can contact me on my direct number at or email me at .