

CORTEZ . ICH-044

Traditional



SPECIFICATIONS

SQ. FT.	1760
BEDROOMS:	3
BATHROOMS:	2
LEVELS:	1.5

OPTIONAL FEATURES

- Green Certification
- Energy Star

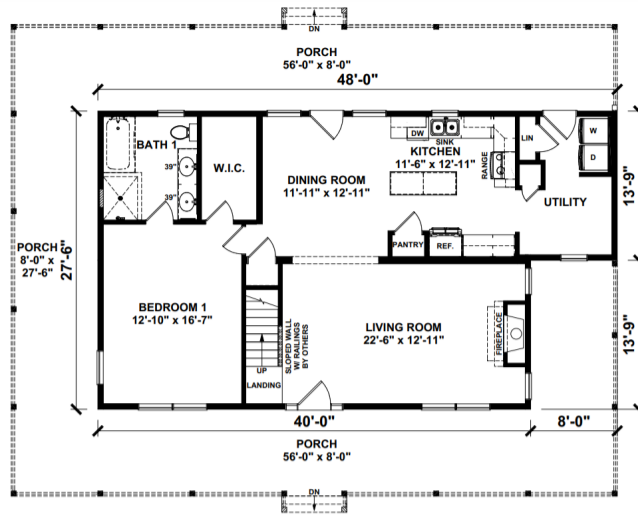
The Cortez is a charming Cape Cod-style home, designed to offer comfort and functionality in a 1.5-story layout. With 1760 square feet of living space, it includes three bedrooms and two bathrooms, making it ideal for families or individuals needing ample space. The main level features an open-concept living area, blending a spacious living room with a dining area and a well-appointed kitchen. This design promotes easy movement and interaction, perfect for family gatherings and entertaining guests. The master suite, also located on the main floor, provides a private retreat with a full bathroom and generous closet space.

Upgrades Included: Wrap around porch roof, 3 dormers, Board & Batten Siding, Vinyl Plank Flooring, 42" Maple Cabinets, & Corian Countertops.

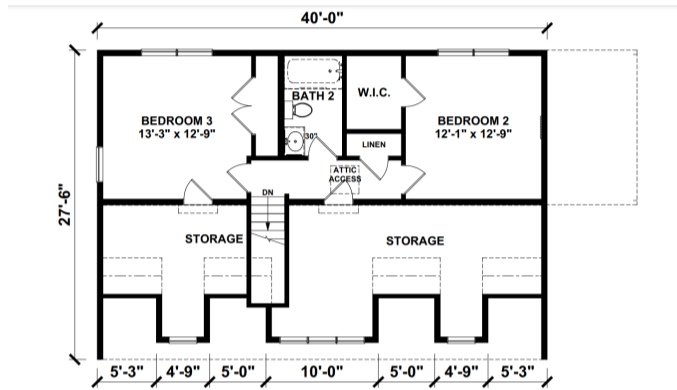
Onsite by Others: Kitchen sink and faucet , Appliances not included.



FIRST FLOOR



SUGGESTED SECOND FLOOR



**YOUR
NEW HOME
CONSULTANT**



Hi, I'm , your personal Modular Home Consultant

I would be happy to help you with any questions you may have. You can contact me on my direct number at or email me at .

