

CAPE CORAL . ICH-035

Traditional



SPECIFICATIONS

SQ. FT.	4728
BEDROOMS:	3
BATHROOMS:	2.5
LEVELS:	2

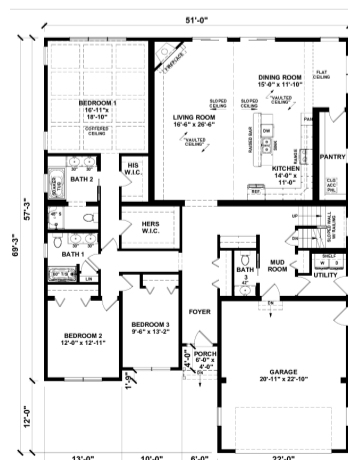
OPTIONAL FEATURES

- Green Certification
- Energy Star

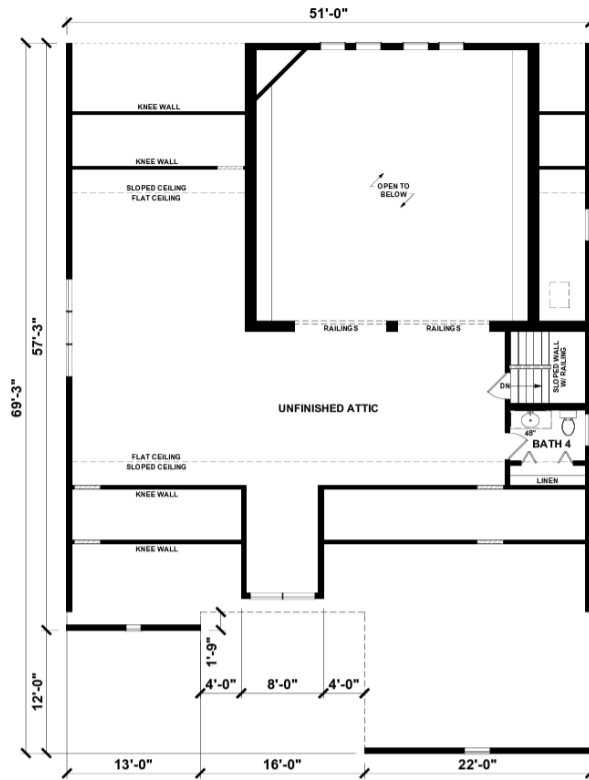
Upgrades Included: Quartz countertops in kitchen and mudroom, painted cabinets in kitchen, bathrooms, and mudroom, stairs with oak treads and white risers.

Onsite by Others: Flooring not included, appliances nt included, garage door not included, fireplace onsite by others

FIRST FLOOR



SUGGEST SECOND FLOOR



**YOUR
NEW HOME
CONSULTANT**



Hi, I'm , your personal Modular Home Consultant

I would be happy to help you with any questions you may have. You can contact me on my direct number at or email me at .

