

ROSELAND. ICH-061

Traditional



SPECIFICATIONS

SQ. FT.	1210
BEDROOMS:	3
BATHROOMS:	2
LEVELS:	1

OPTIONAL FEATURES

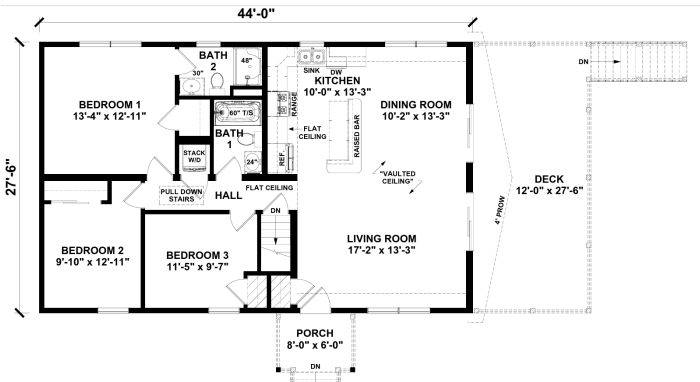
- ☒ Green Certification
- ☒ Energy Star

Upgrades Included: LVP flooring throughout, Hanstone Quartz kitchen countertop, oak cabinets, upgraded interior trim, clay windows

Onsite by Others: deck and porches by others, shakes siding not included (pricing does include standard vinyl siding)

Appliances not included.

FIRST FLOOR





Hi, I'm , your personal Modular Home Consultant

I would be happy to help you with any questions you may have. You can contact me on my direct number at or email me at .