

GRACEVILLE. ICH-049

Traditional



SPECIFICATIONS

SQ. FT.	2706
BEDROOMS:	3
BATHROOMS:	2.5
LEVELS:	2

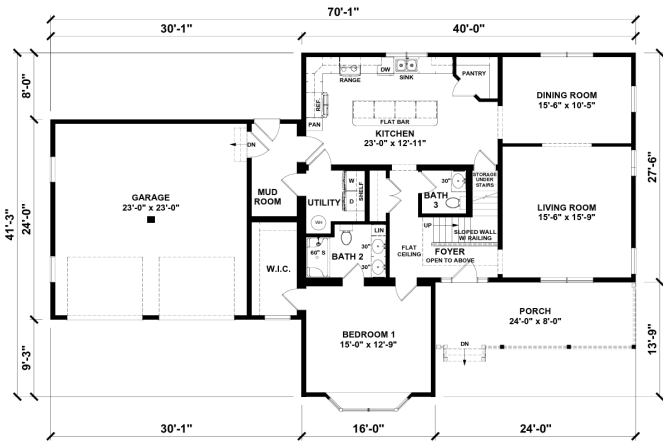
OPTIONAL FEATURES

- ☒ Green Certification
- ☒ Energy Star

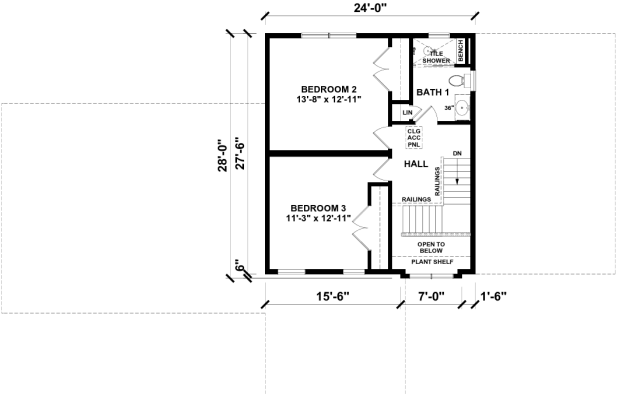
Upgrades Included: Oak stairs with White Risers, LVP throughout, ceramic tile in bathrooms, white cabinets, granite countertop.

Onsite by Others: Appliances not included, porch onsite by others.

FIRST FLOOR



SECOND FLOOR



YOUR
NEW HOME
CONSULTANT

Hi, I'm , your personal Modular Home Consultant

I would be happy to help you with any questions you may have. You can contact me on my direct number at or email me at .