

SARASOTA. ICH-046

Traditional



SPECIFICATIONS

SQ. FT.	1844
BEDROOMS:	4
BATHROOMS:	3
LEVELS:	2

OPTIONAL FEATURES

- ☒ Green Certification
- ☒ Energy Star

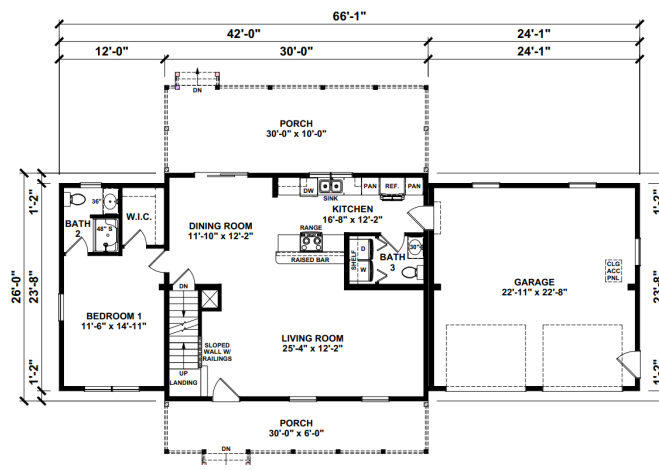
Stepping inside the Sarasota , you're greeted by an open-concept layout that seamlessly connects the living room, dining area, and kitchen, creating a spacious and airy atmosphere. The abundant natural light streaming through the windows further enhances the sense of openness, making the interior feel bright and inviting.

Upstairs, the Sarasota 2 features three bedrooms, including a luxurious master suite complete with a walk-in closet and an ensuite bathroom. The additional bedrooms are well-proportioned and offer flexibility for use as guest rooms, home offices, or children's bedrooms, depending on the needs of the residents.

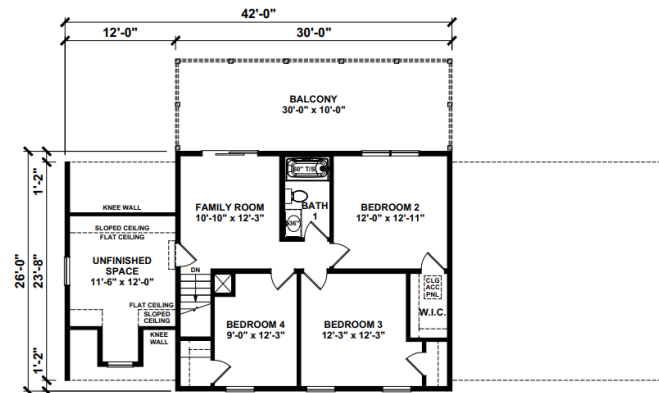
Upgrades Included: LVP flooring throughout, granite countertop, oak cabinets, stairs with oak treads and white risers.

Onsite by Others: Appliances, decks and porch, railing for interior stairs.

FIRST FLOOR



SECOND FLOOR



YOUR
NEW HOME
CONSULTANT

Hi, I'm , your personal Modular Home Consultant

I would be happy to help you with any questions you may have. You can contact me on my direct number at or email me at .