

# HIGH SPRINGS. ICH-052

Traditional



## SPECIFICATIONS

SQ. FT.	1760
BEDROOMS:	3
BATHROOMS:	2.5
LEVELS:	2

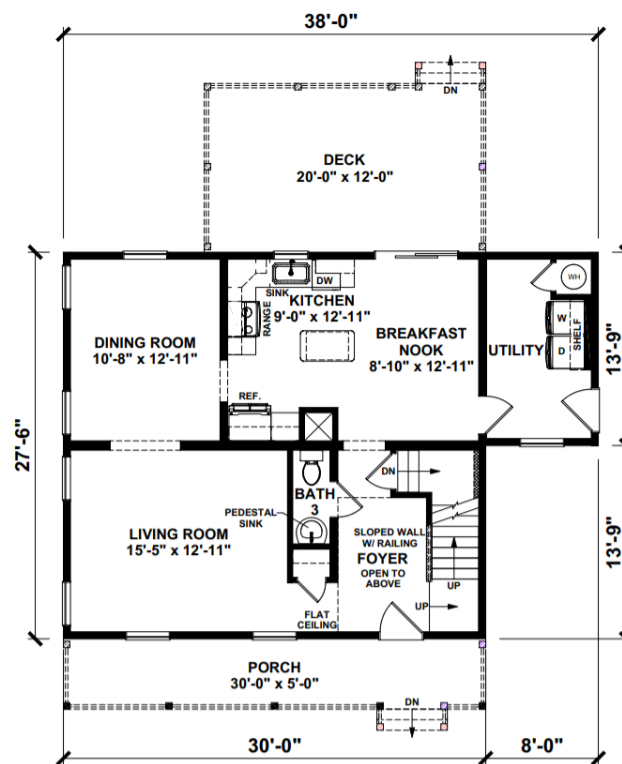
## OPTIONAL FEATURES

- ☒ Green Certification
- ☒ Energy Star

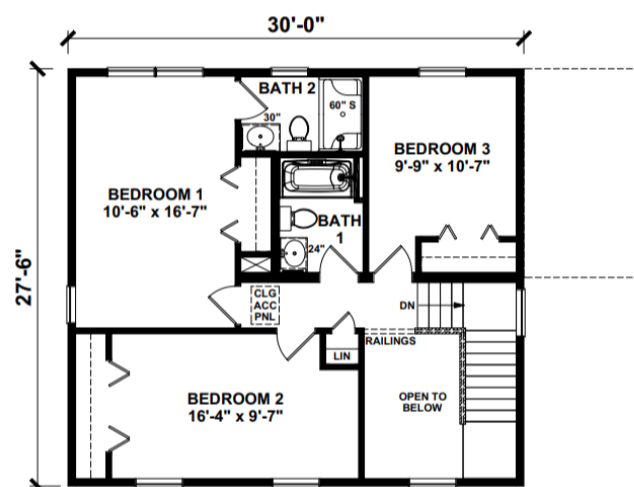
Upgrades Included: White cabinets, LVP flooring throughout, stairs with oak treads and white risers, granite countertop.

Onsite by Others: No appliances, porch and railing onsite by others, deck onsite by others.

### FIRST FLOOR



## SECOND FLOOR



YOUR  
NEW HOME  
CONSULTANT

Hi, I'm , your personal Modular Home Consultant

I would be happy to help you with any questions you may have. You can contact me on my direct number at or email me at .