

EDGEWATER . ICH-048

Chalet



SPECIFICATIONS

SQ. FT.	2504
BEDROOMS:	2
BATHROOMS:	2
LEVELS:	1.5

OPTIONAL FEATURES

- Green Certification
- Energy Star

The Edgewater is designed to offer a blend of contemporary living and functional spaces, tailored for families or individuals seeking a comfortable, yet stylish home. This home is crafted with an emphasis on maximizing living space, offering both practicality and aesthetic appeal.

One of the great Features of this house is the window and all the light that you get. It makes the home feel very light and airy.

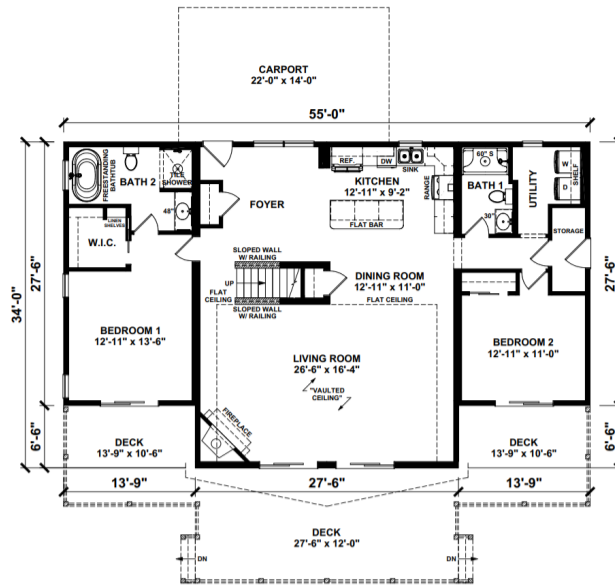
The Edgewater 2 includes multiple bedrooms, each designed with comfort and privacy in mind. The master suite is a standout feature, offering a spacious bedroom, a large walk-in closet, and a luxurious en-suite bathroom. The additional bedroom is generously sized, making it ideal for children, guests, or even a home office. The bathrooms are equipped with modern fixtures and finishes, ensuring a comfortable and stylish environment.

Upgrades Included: Ceramic tile flooring in bathrooms, upgraded carpeting in bedrooms, LVP flooring throughout, red oak stairs with white treads, painted cabinets.

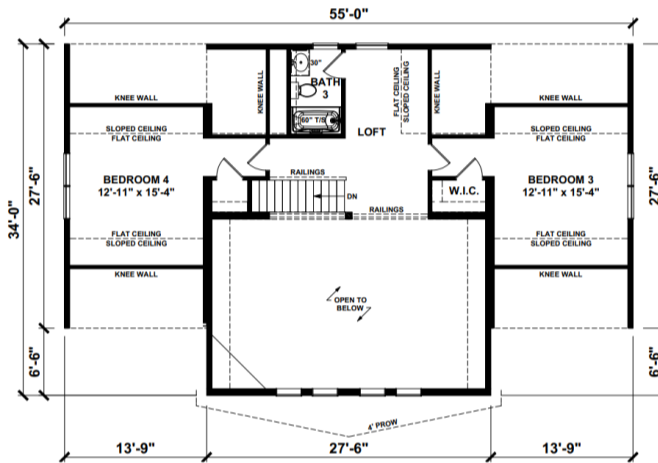
Onsite by Others: No appliances, deck by others, carport by others, countertop onsite by others, kitchen sink onsite by others, kitchen faucet not provided.



FIRST FLOOR



SUGGESTED SECOND FLOOR



**YOUR
NEW HOME
CONSULTANT**



Hi, I'm , your personal Modular Home Consultant

I would be happy to help you with any questions you may have. You can contact me on my direct number at or email me at .

