

EAGLE LAKE. ICH-039

Traditional



SPECIFICATIONS

SQ. FT.	1964
BEDROOMS:	4
BATHROOMS:	2
LEVELS:	1

OPTIONAL FEATURES

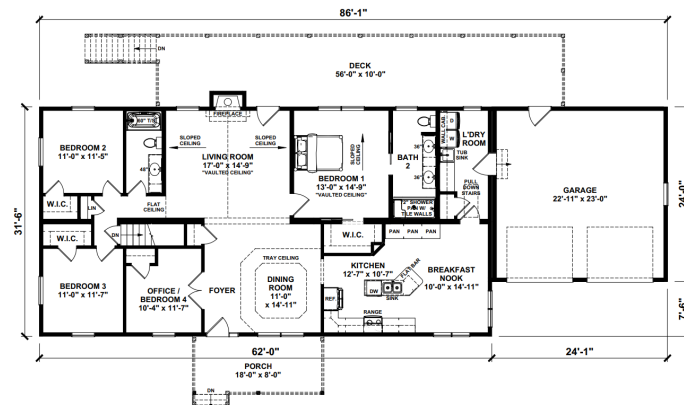
- ☒ Green Certification
- ☒ Energy Star

The Eagle Lake home plan offers a spacious and modern layout designed for comfortable living. With three bedrooms and two bathrooms, it provides ample space for families or individuals. The open-concept living area seamlessly connects the kitchen, dining, and living spaces, fostering a sense of togetherness. Large windows allow plenty of natural light to flood the interior, creating a bright and inviting atmosphere. The master suite boasts a luxurious ensuite bathroom and a walk-in closet, providing a peaceful retreat. Additionally, a covered porch extends the living space outdoors, perfect for entertaining or relaxing. With its contemporary design and functional layout, the Eagle Lake home plan combines style and practicality for modern living

Upgrades Included: LVP Flooring, Upgraded carpet in bedrooms, Ceramic flooring in bathrooms and utility room, Vaulted ceiling in master bedroom and living room, tray ceiling in dining room

Onsite by Others: garage, porch, stone chimney, deck
Appliances not included,

FIRST FLOOR



YOUR
NEW HOME
CONSULTANT

Hi, I'm , your personal Modular Home Consultant

I would be happy to help you with any questions you may have. You can contact me on my direct number at or email me at .