

# PALM COAST. ICH-037

Traditional



## SPECIFICATIONS

SQ. FT.	2270
BEDROOMS:	3
BATHROOMS:	2.5
LEVELS:	2

## OPTIONAL FEATURES

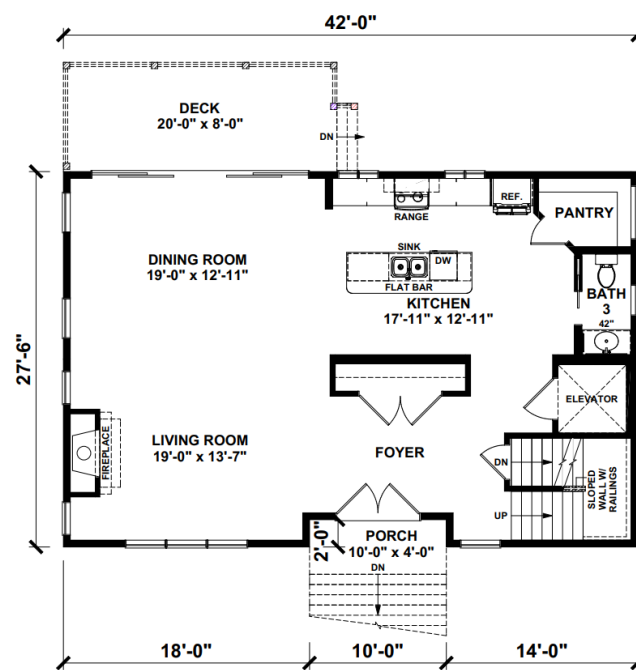
- ☒ Green Certification
- ☒ Energy Star

The Palm Coast offers a spacious layout, with a focus on comfort and functionality, making it suitable for a variety of family needs. It includes a spacious living area, a modern kitchen, and offering flexibility for customization to meet specific needs and preferences.

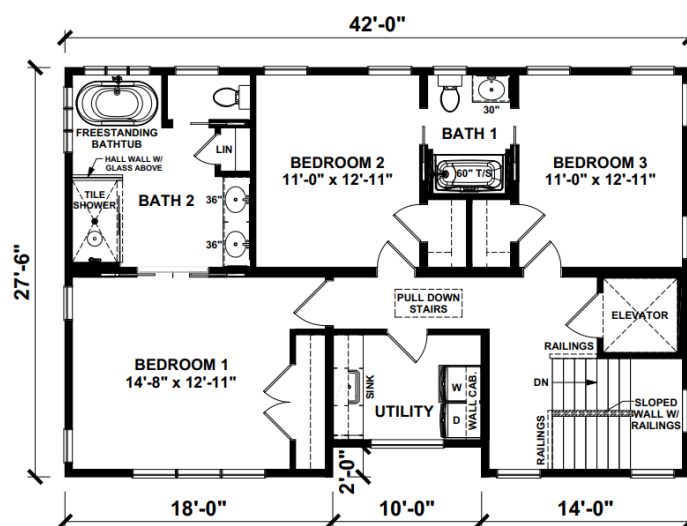
Upgrades Included: Carpet in bedrooms, oak stairs, white risers, upgraded Andersen Patio doors

Onsite by Others: Appliances not included, kitchen countertop not included, all kitchen and bathroom floors are onsite by others, toilets not included, baths and showers onsite by others, kitchen and laundry cabinets are onsite by others, Hardie siding onsite by others, deck and exterior stone by others

### FIRST FLOOR



## SECOND FLOOR



YOUR  
NEW HOME  
CONSULTANT

Hi, I'm , your personal Modular Home Consultant

I would be happy to help you with any questions you may have. You can contact me on my direct number at or email me at .