

BELL GLADE. ICH-022

Traditional



SPECIFICATIONS

SQ. FT.	1976
BEDROOMS:	3
BATHROOMS:	2.5
LEVELS:	1.5

OPTIONAL FEATURES

- ☒ Green Certification
- ☒ Energy Star

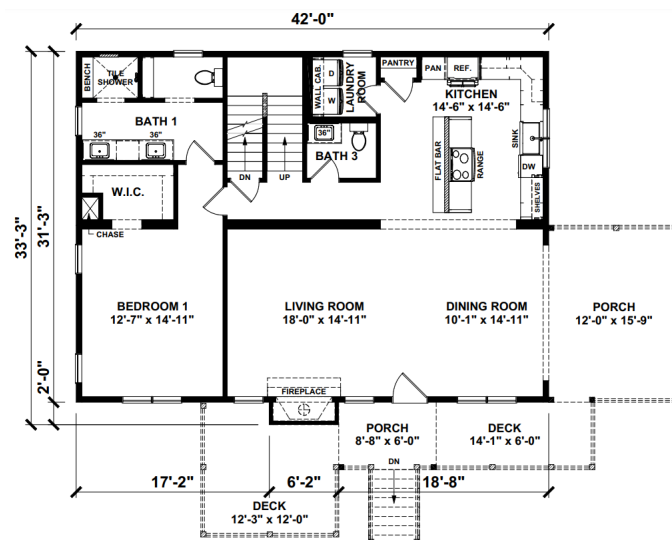
The Bell Glade is a charming fusion of modern elegance and cozy comfort, encapsulating the essence of contemporary living with a touch of traditional warmth.

Upon stepping inside, you're greeted by a spacious foyer that sets the tone for the rest of the home. The open floor plan seamlessly connects the living room, kitchen, and dining area, creating an airy and expansive feel perfect for both entertaining guests and everyday living. Large windows flood the space with natural light, enhancing the ambiance and highlighting the carefully curated design elements throughout.

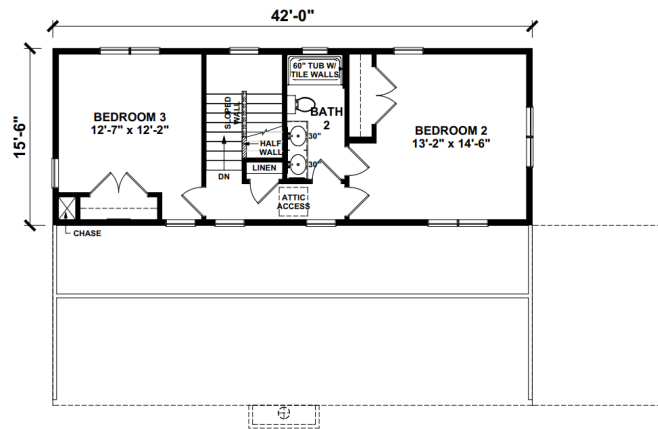
The master suite is a luxurious retreat, complete with a spacious bedroom, walk-in closet, and ensuite bathroom featuring elegant fixtures and finishes.

Upgrades Included: Casement Windows throughout, Shiplap on walls in Living Room, Dining Room, and First Floor Hall, 42" upper cabinets in kitchen with Hanstone Quartz Countertops.

Onsite by Others: Optional siding, soffit, and fascia. LVP Flooring and interior base molding, No Appliances



SUGGESTED SECOND FLOOR



YOUR
NEW HOME
CONSULTANT



Hi, I'm Justin Bryant, your personal Modular Home Consultant

I would be happy to help you with any questions you may have. You can contact me on my direct number at **(877) 410-6334** or email me at justin.bryant@impresamodular.com.