

SPRING HILL . ICH-026

Traditional



SPECIFICATIONS

SQ. FT.	1640
BEDROOMS:	3
BATHROOMS:	2
LEVELS:	1

OPTIONAL FEATURES

- Green Certification
- Energy Star

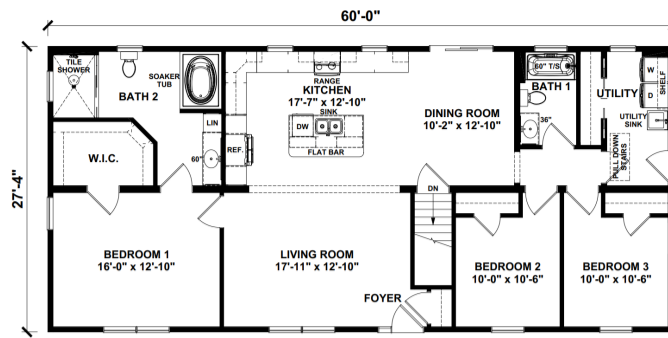
The Spring Hill is a traditional ranch home that is a versatile residence designed for efficiency and comfort. It features a sleek, contemporary aesthetic with a spacious open floor plan that seamlessly connects the living, dining, and kitchen areas. Large windows throughout allow for plenty of natural light, enhancing the airy feel of the space. The home includes three bedrooms and two bathrooms, with the master suite offering a private retreat complete with an en-suite bathroom. A stylish kitchen with modern appliances and ample counter space caters to culinary enthusiasts. Additionally, the design incorporates energy-efficient features and sustainable materials, aligning with modern eco-friendly standards. The exterior boasts clean lines and a minimalist facade, complemented by a functional layout that emphasizes both form and function. Overall, the Spring Hill home blends practicality with elegance, making it a desirable option for contemporary living.

Upgrades Included: LVP flooring throughout, ceramic tile in bathrooms, painted cabinets, Hanstone quartz countertop, ceramic tiled shower.

Onsite by Others: No appliances



FIRST FLOOR



**YOUR
NEW HOME
CONSULTANT**



Hi, I'm , your personal Modular Home Consultant

I would be happy to help you with any questions you may have. You can contact me on my direct number at or email me at .

