

PAHOKEE . ICH-025

Traditional



SPECIFICATIONS

SQ. FT.	1528
BEDROOMS:	3
BATHROOMS:	4
LEVELS:	1

OPTIONAL FEATURES

- Green Certification
- Energy Star

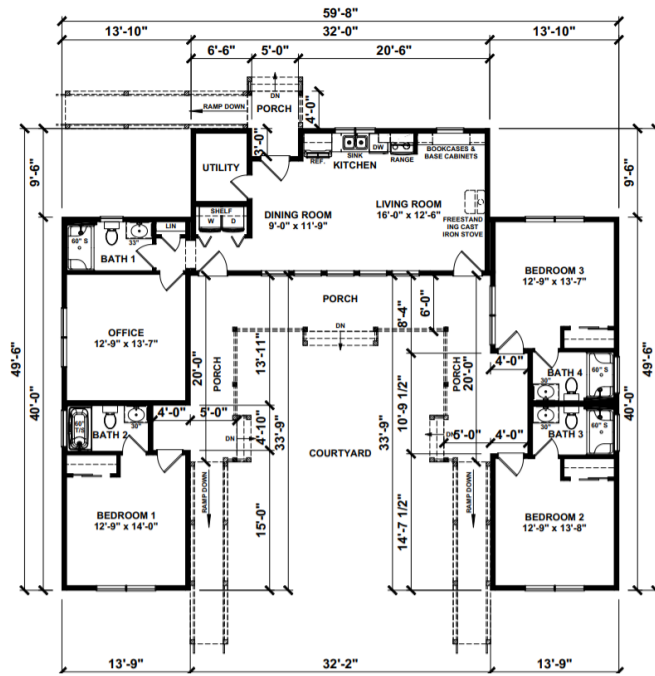
Upon entering the Pahokee, you are greeted by a spacious foyer that flows effortlessly into the heart of the home—the expansive great room. This central living area is bathed in natural light, thanks to strategically placed windows that not only illuminate the space but also provide picturesque views of the surrounding landscape. The master suite is a sanctuary in itself, featuring a spacious layout, a luxurious ensuite bathroom with dual vanities, and a sizable walk-in closet—a perfect retreat after a long day.

Upgrades Included: Ceramic tile floors in bathrooms, LVP flooring throughout, Hanstone quartz kitchen countertop, painted cabinets.

Onsite by Others: porches, metal porch roof and shed dormer roof , pricing is for white windows, no appliances.



FIRST FLOOR



YOUR
NEW HOME
CONSULTANT



Hi, I'm , your personal Modular Home Consultant

I would be happy to help you with any questions you may have. You can contact me on my direct number at or email me at .

