

BABSON PARK . ICH-017

Traditional



SPECIFICATIONS

SQ. FT.	1440
BEDROOMS:	2
BATHROOMS:	2
LEVELS:	1.5

OPTIONAL FEATURES

- Green Certification
- Energy Star

The Babson Park offers a perfect blend of traditional design, modern amenities, and energy efficiency, making it an ideal choice for those looking for a comfortable and sustainable home.

Upon entering, you are welcomed into a large living area that flows seamlessly into the kitchen and dining room. The open-concept design enhances the feeling of space and encourages a natural flow of movement throughout the main living areas. The kitchen is well-appointed with ample counter space, and storage, making it ideal for both everyday meals and entertaining guests.

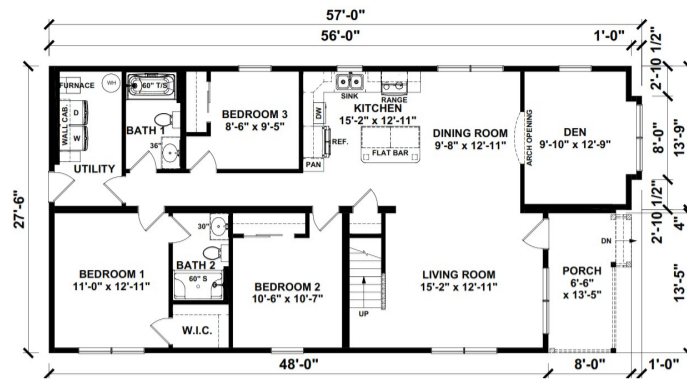
The first floor also includes a generously sized bedroom and a full bathroom, offering convenience and flexibility, whether it's for guests or a home office. Large windows throughout the home ensure plenty of natural light, creating a warm and inviting atmosphere.

Upgrades Included: Carpet and Vinyl Plank Flooring, Laundry Room,

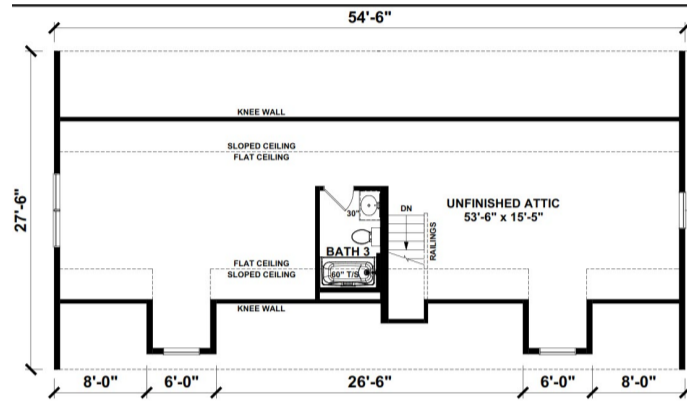
Not Included: Appliances



FIRST FLOOR



SUGGESTED SECOND FLOOR



**YOUR
NEW HOME
CONSULTANT**



Hi, I'm , your personal Modular Home Consultant

I would be happy to help you with any questions you may have. You can contact me on my direct number at or email me at .

