

AUBURNDALE . ICH-016

Traditional



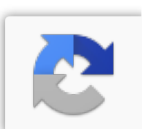
SPECIFICATIONS

SQ. FT.	1748
BEDROOMS:	2
BATHROOMS:	2
LEVELS:	1

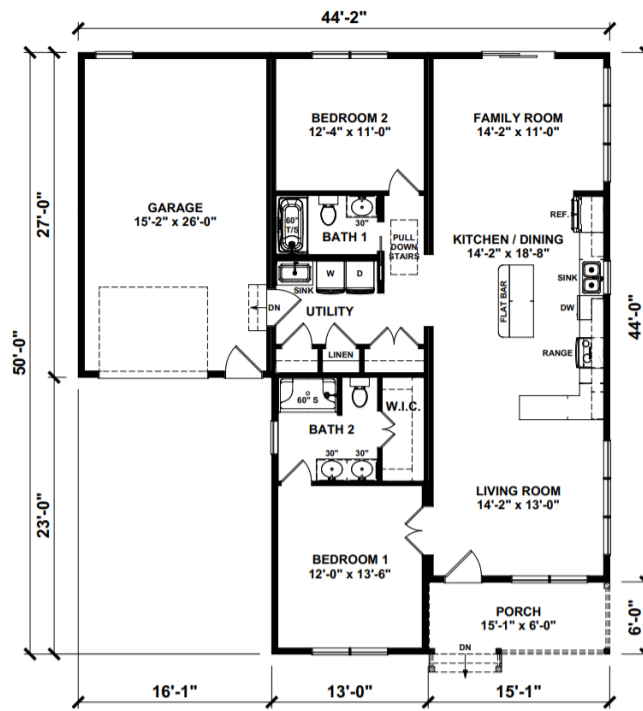
OPTIONAL FEATURES

Green Certification Energy Star Garage
Included

The Auburndale is a custom home comes with 27' x 16' One Car Garage, 6' x 15' Porch Roof (Posts, porch floor, railings, on-site by others), and Oak Cabinets. It is the perfect home if you are just starting out or if you are ready to retire. Kitchen and dining room are one big open area in the front of the home. Both bedrooms are in the back of this home so there is no traffic noise. Vinyl plank flooring is on site by others.



FIRST FLOOR



YOUR
NEW HOME
CONSULTANT



Hi, I'm , your personal Modular Home Consultant

I would be happy to help you with any questions you may have. You can contact me on my direct number at or email me at .

