

ANNA MARIA. ICH-003

Traditional



SPECIFICATIONS

SQ. FT.	1616
BEDROOMS:	4
BATHROOMS:	3
LEVELS:	1.5

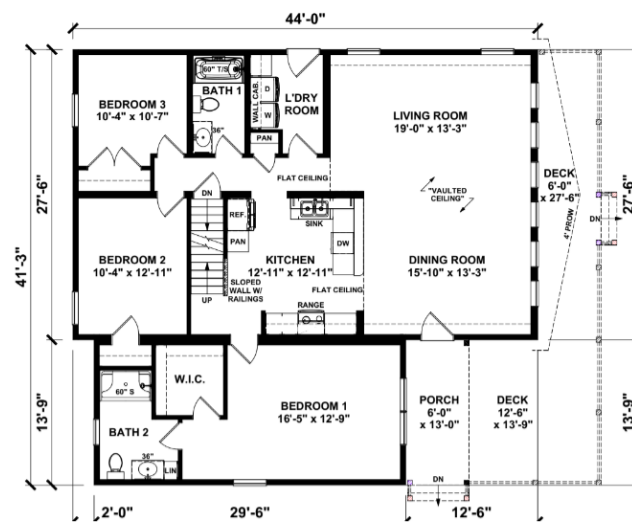
OPTIONAL FEATURES

- ☒ Green Certification
- ☒ Energy Star

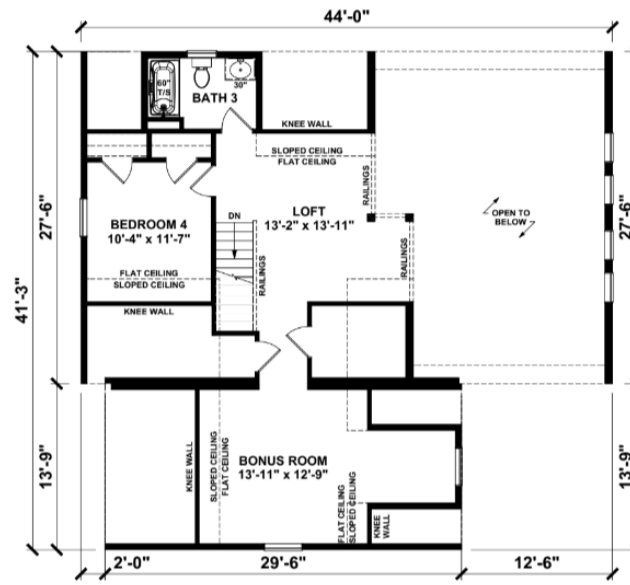
The Anna Maria home plan offers a blend of elegance and functionality. This Chalet design boasts a spacious layout with three bedrooms and two-and-a-half baths, providing ample space for comfortable living. The open-concept kitchen, dining, and living areas promote seamless interaction and entertaining. A covered porch enhances outdoor living, perfect for enjoying pleasant evenings. With modern amenities and customizable options, the Anna Maria plan offers versatility to suit diverse lifestyles while maintaining a timeless appeal.

- *Upgrades include: Painted Kitchen Cabinets, Hanstone Quartz Kitchen Countertop, Farm Sink, Ceramic tile in 2 bathrooms, Johnson Hardwood throughout.
- *Onsite by Others: Porch and metal roof

FIRST FLOOR



SUGGEST SECOND FLOOR



YOUR
NEW HOME
CONSULTANT



Hi, I'm Justin Bryant, your personal Modular Home Consultant

I would be happy to help you with any questions you may have. You can contact me on my direct number at **(877) 410-6334** or email me at justin.bryant@impresamodular.com.