

ALTHA . ICH-006

Traditional



SPECIFICATIONS

SQ. FT.	2093
BEDROOMS:	2
BATHROOMS:	2
LEVELS:	1

OPTIONAL FEATURES

Green Certification Energy Star Garage
Included

The Altha embodies modern elegance and functionality. With its clean lines and thoughtful design, this single-story home seamlessly blends style with practicality. The open floor layout creates a sense of spaciousness, ideal for both family living and entertaining guests.

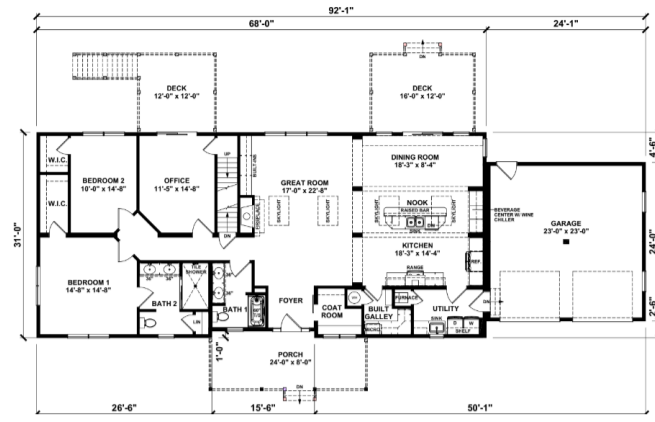
Entering through the foyer, you're greeted by a bright and airy living room that flows effortlessly into the dining area and kitchen. Large windows throughout the home allow natural light to illuminate every corner, creating a warm and inviting atmosphere. The kitchen is a chef's dream, featuring ample counter space, sleek cabinetry, and high-end appliances.

Upgrade's Included: Quartz Countertop, Ceramic Backsplash, White Cabinets, Walk in Ceramic Shower, Stone Gas Fireplace, Appliances.

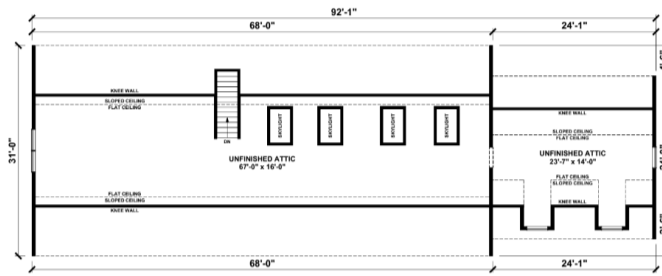
Onsite by Others: Flooring front porch and gable over front porch.



FIRST FLOOR



SUGGESTED SECOND FLOOR



**YOUR
NEW HOME
CONSULTANT**



Hi, I'm , your personal Modular Home Consultant

I would be happy to help you with any questions you may have. You can contact me on my direct number at or email me at .

