

THE ALPINE RETREAT. SHO-001

Contemporary



SPECIFICATIONS

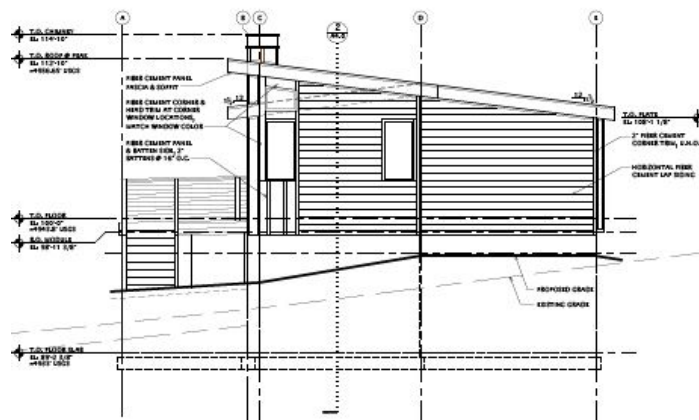
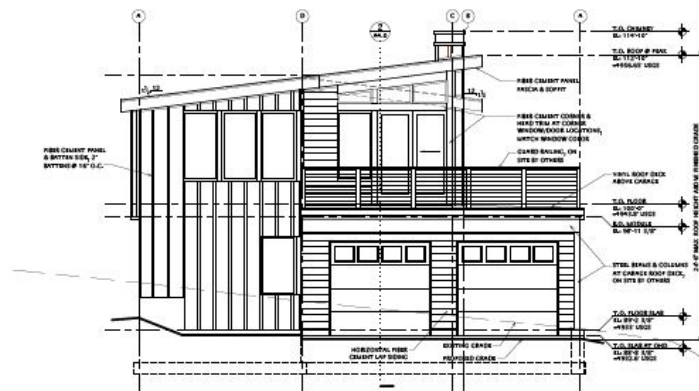
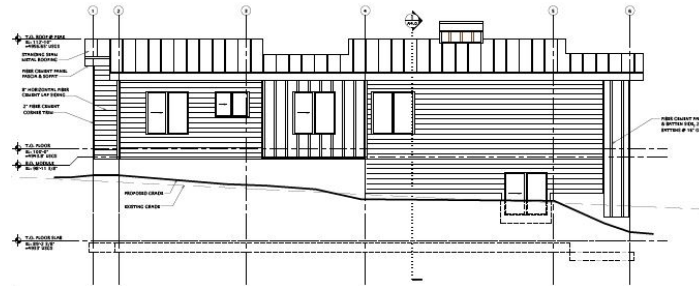
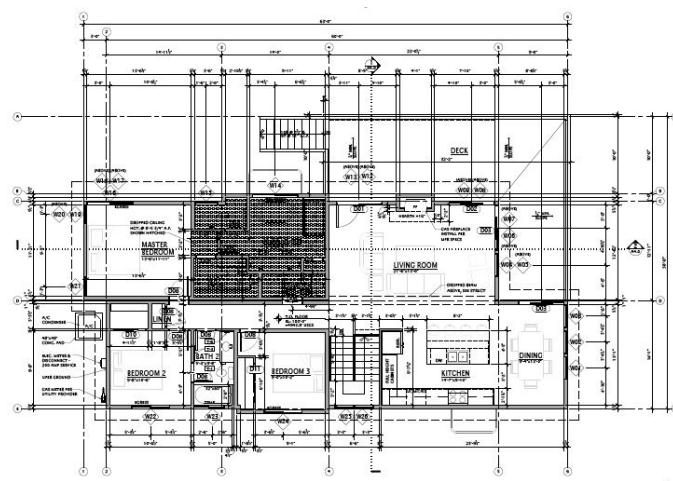
SQ. FT.	1514
BEDROOMS:	3
BATHROOMS:	2.5
LEVELS:	1

OPTIONAL FEATURES

- ☒ Green Certification
- ☒ Energy Star

The Alpine Retreat is Impresa Modular's Home that will be on display at the 2024 International Builder Show in the ProBuilder Show Village. This home will takes its place at the 2024 show to demonstrate the high-performance energy-efficiency, design flexibility, and resilient construction that defines homes built using today's modular building systems. High ceilings, expansive glass, and unimpeded views add character to this home plan. This home benefits from the high-end, well-known suppliers and vendors that will offer their products to be on display as part of the construction of this home. The successful buyer of this home will also get all of the upgrades as part of the purchase. Professional designers work with each of the vendors to create a one-of-a-kind home. We produce one of these unique homes each year for the show. Make this the year to make this home yours!

This home can be built as a single level home, or for the sloped lots, steps can be accommodated to a lower level where a garage and additional bedrooms can be completed.



YOUR
NEW HOME
CONSULTANT

Hi, I'm , your personal Modular Home Consultant

I would be happy to help you with any questions you may have. You can contact me on my direct number at or email me at .