

# CASTLEWOOD. NSC-023

Traditional



### SPECIFICATIONS

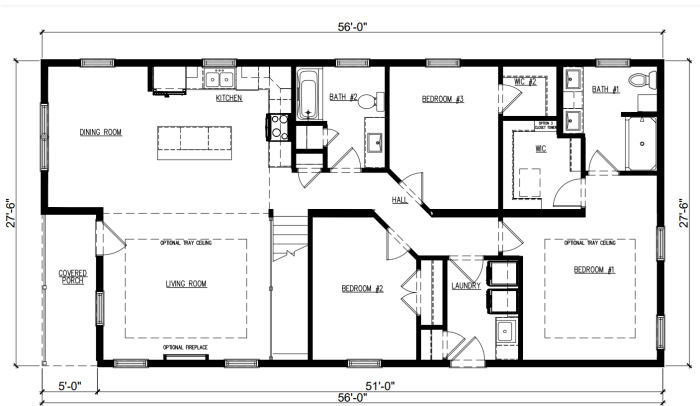
SQ. FT.	1546
BEDROOMS:	3
BATHROOMS:	2
LEVELS:	1

### OPTIONAL FEATURES

- ☒ Green Certification
- ☒ Energy Star

The Castlewood offers a 3 bedroom ranch layout with an open plan living area as well as a quaint front porch. Tray ceilings add character and height in your living room and master bedroom.

### FIRST FLOOR



YOUR  
NEW HOME  
CONSULTANT

Hi, I'm , your personal Modular Home Consultant

I would be happy to help you with any questions you may have. You can contact me on my direct number at or email me at .