

BLUFFTON. IBS-102

Traditional

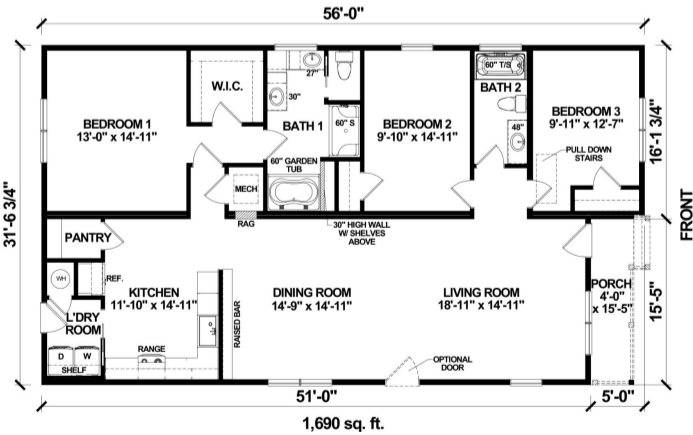


SPECIFICATIONS

SQ. FT.	1690
BEDROOMS:	3
BATHROOMS:	2
LEVELS:	1

OPTIONAL FEATURES

The Bluffton offers an open 1,690 sqft plan with an inviting front porch. With three bedrooms and two full bathrooms, this home offers a lot of space for living! The plan works well on deep and narrow lots. The rear Laundry and Utility room means you can easily add a garage to this plan on-site.



YOUR
NEW HOME
CONSULTANT

Hi, I'm , your personal Modular Home Consultant

I would be happy to help you with any questions you may have. You can contact me on my direct number at or email me at .