

WINECREEK. IBS-101

CabinCottageModern



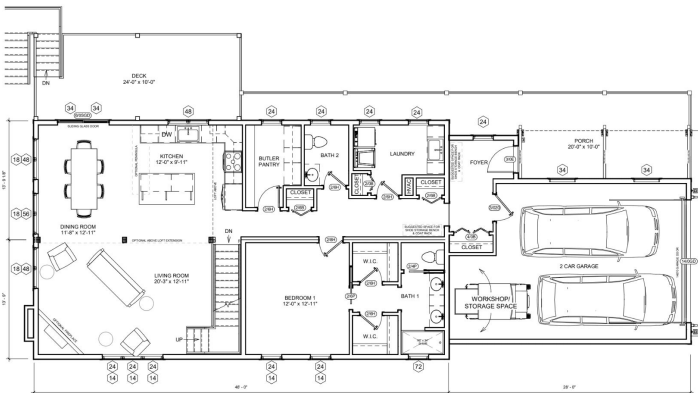
SPECIFICATIONS

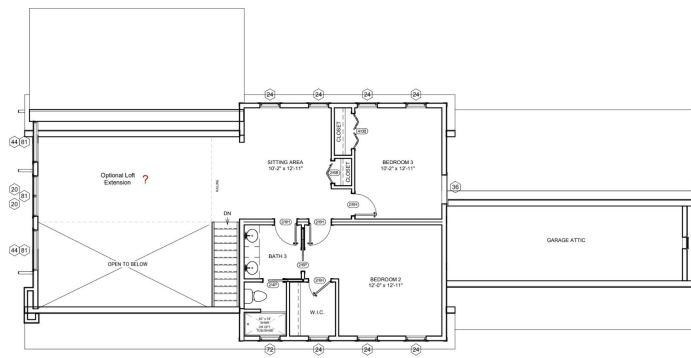
SQ. FT.	1980
BEDROOMS:	3
BATHROOMS:	2
LEVELS:	2

OPTIONAL FEATURES

- ☒ Green Certification
- ☒ Energy Star
- ☒ Garage
- Included

The Winecreek is a beautiful mountain modern design. It's a perfect plan for that steeply sloped lot on the lake or in the mountains. It comes with two options for the primary bedroom location. Choose the primary bedroom in the loft and wake up to the view looking out the wall of windows to that amazing view every morning. Or select the primary bedroom on the first floor to give you the ease of one-floor living and enjoy the view from the great room! With a full optional basement, you can have five bedrooms making this home very attractive for that Airbnb investment... it can sleep ten or more!





YOUR
NEW HOME
CONSULTANT

Hi, I'm , your personal Modular Home Consultant

I would be happy to help you with any questions you may have. You can contact me on my direct number at or email me at .