

NORMANDY . NSP-046

Traditional



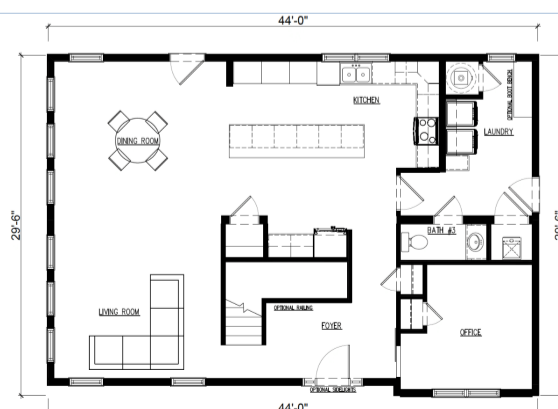
SPECIFICATIONS

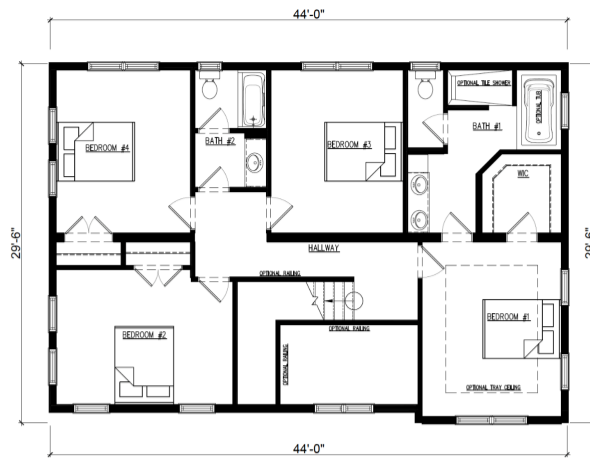
SQ. FT.	2622
BEDROOMS:	4
BATHROOMS:	2.5
LEVELS:	2

OPTIONAL FEATURES

- Green Certification
- Energy Star

This two-story home has an open foyer with tall ceilings and open staircase. There is a lengthy, vast kitchen with an island open to the living/dining area. Also in the living space are numerous windows bringing in natural light. The porch wraps around one side of the home allowing you views to various sides of the outdoors around you. The upstairs allows for four bedrooms while also giving you office space on the main floor. This feels truly like a traditional farmhouse with wide open spaces and upstairs bedrooms to rest your head and look out over the horizon.





YOUR
NEW HOME
CONSULTANT



Hi, I'm , your personal Modular Home Consultant

I would be happy to help you with any questions you may have. You can contact me on my direct number at or email me at .

