

HEMLOCK. NSP-044

Traditional



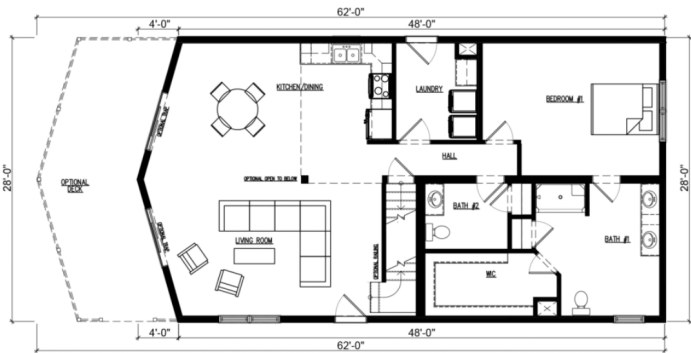
SPECIFICATIONS

SQ. FT.	1797
BEDROOMS:	2
BATHROOMS:	2.5
LEVELS:	1

OPTIONAL FEATURES

- ☒ Green Certification
- ☒ Energy Star

The main level of this home manages to balance a huge master en-suite with spacious living area and a prow front, perfect for overlooking the lake. Whether you use this as your holiday lake home or just as your regular home, you are really going to enjoy all the space—especially all the attic space.



YOUR
NEW HOME
CONSULTANT



Hi, I'm Justin Bryant, your personal Modular Home Consultant

I would be happy to help you with any questions you may have. You can contact me on my direct number at **(877) 410-6334** or email me at justin.bryant@impresamodular.com.