

GALLATIN. NSP-036

Traditional



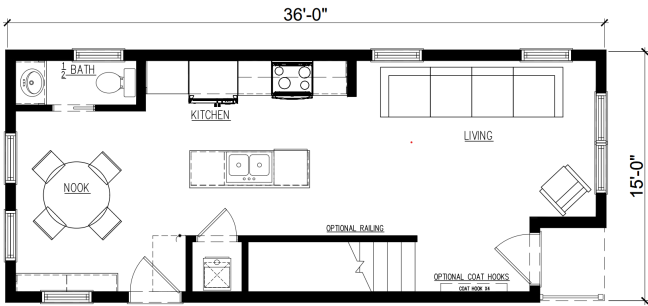
SPECIFICATIONS

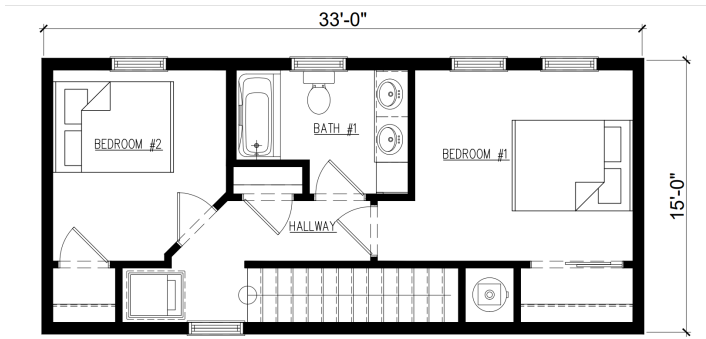
SQ. FT.	1035
BEDROOMS:	2
BATHROOMS:	1.5
LEVELS:	2

OPTIONAL FEATURES

- ☒ Green Certification
- ☒ Energy Star

The Gallatin plan is a charming and practical design that offers comfortable living in a compact footprint. With a total living area of approximately 1035 square feet, this two story home provides a functional and efficient layout and promotes a seamless flow between the spaces, making it ideal for both daily living and entertaining. This home has a half bath on the first floor for easy access when first arriving home with an additional full bath on second floor.





YOUR
NEW HOME
CONSULTANT

Hi, I'm , your personal Modular Home Consultant

I would be happy to help you with any questions you may have. You can contact me on my direct number at or email me at .