

BLUE RIVER. NSP-034

Traditional



SPECIFICATIONS

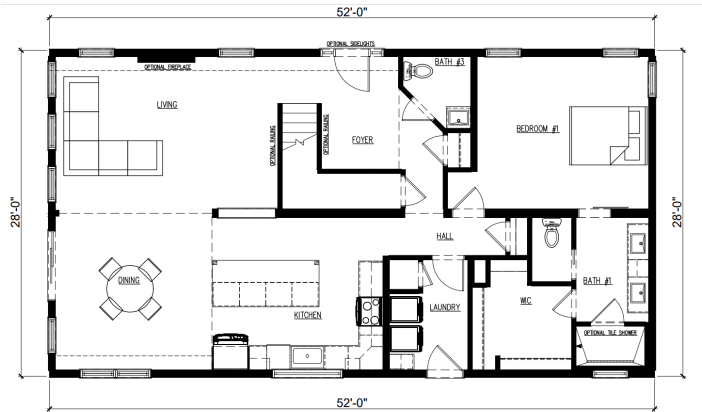
SQ. FT.	2912
BEDROOMS:	3
BATHROOMS:	3
LEVELS:	1.5

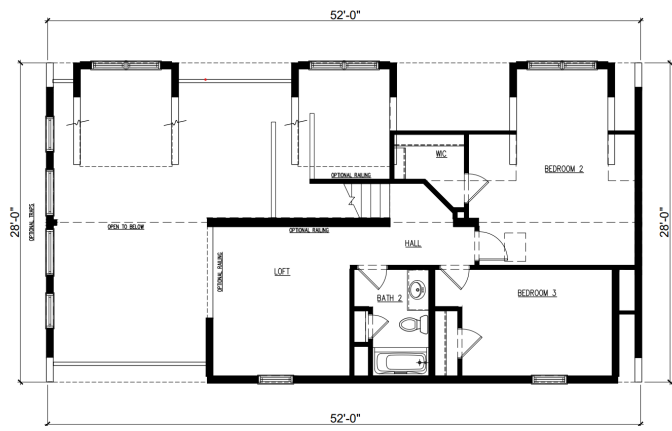
OPTIONAL FEATURES

- ☒ Green Certification
- ☒ Energy Star

This luscious, open plan home boasts magnificent windows and endless natural light. The spacious foyer, large kitchen island, open to below loft, and beautiful vaulted living area show this home’s true value and design.

*Contact us for different plan options for the finished cape.





YOUR
NEW HOME
CONSULTANT

Hi, I'm , your personal Modular Home Consultant

I would be happy to help you with any questions you may have. You can contact me on my direct number at or email me at .