

ASHVILLE . CBC-2005

Traditional



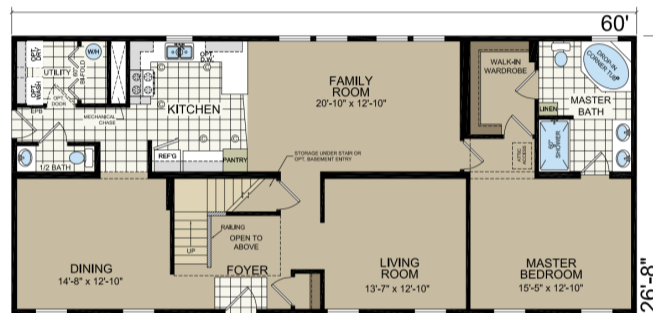
SPECIFICATIONS

SQ. FT.	2842
BEDROOMS:	4
BATHROOMS:	3
LEVELS:	2

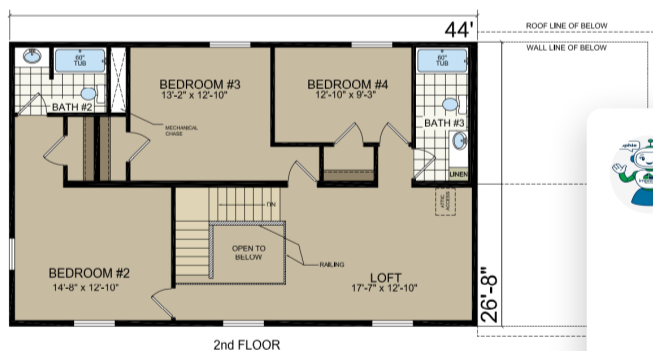
OPTIONAL FEATURES

- Green Certification
- Energy Star

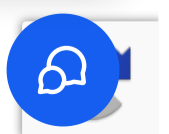
FIRST FLOOR



SECOND FLOOR



Hi there! I'm Sophie, your AI chatbot, here to help answer your questions about Impresa Modular and our homes. I'll do my best to provide helpful, accurate answers. However, some questions, including pricing questions, are better suited for one of our team members. If you ever need more detailed information or want to connect with a real person, please go to our Contact page.



OPTIONAL ULTIMATE KITCHEN 2



OPTIONAL ULTIMATE KITCHEN 3



YOUR
NEW HOME
CONSULTANT



Hi, I'm , your personal Modular Ho

I would be happy to help
contact me on my direct



Hi there! I'm Sophie, your AI chatbot, here to help answer your questions about Impresa Modular and our homes. I'll do my best to provide helpful, accurate answers. However, some questions, including pricing questions, are better suited for one of our team members. If you ever need more detailed information or want to connect with a real person, please go to our Contact page.

