

BRISTOW. CRM-001

Traditional



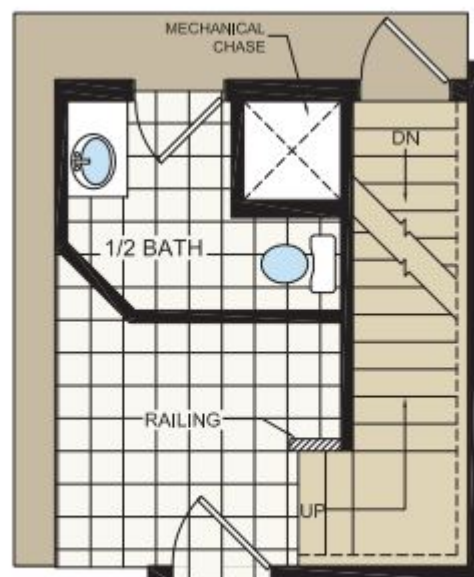
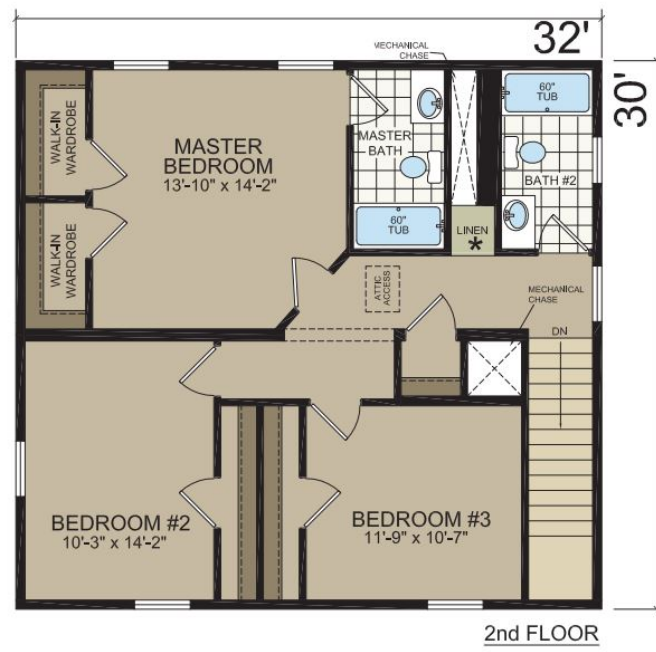
SPECIFICATIONS

SQ. FT.	1920
BEDROOMS:	3
BATHROOMS:	3.5
LEVELS:	2

OPTIONAL FEATURES

- ☒ Green Certification
- ☒ Energy Star

The Bristow is an affordably priced two-story home with lots of flare! It some with 9' ceilings on the first floor. A trey ceiling is located in the upgraded kitchen and it comes standard with stainless appliances. This home is meant for the family that needs space and enjoys comfort! This home is also available in a 4 bedroom configuration!





Hi, I'm , your personal Modular Home Consultant

I would be happy to help you with any questions you may have. You can contact me on my direct number at or email me at .