

EMERSON . CVL-016

Traditional



SPECIFICATIONS

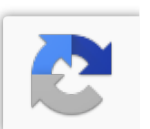
SQ. FT.	2999
BEDROOMS:	5
BATHROOMS:	3.0
LEVELS:	1.5

OPTIONAL FEATURES

- Green Certification
- Energy Star

The Emerson is a very large home plan. This two-story home features a modern exterior with clean lines and large windows, providing an abundance of natural light. The open-concept living area, dining area, and kitchen with an island, are perfect for family gatherings and entertaining. The primary suite is located on the main floor, complete with a walk-in closet and ensuite bathroom, while two additional bedrooms and a bathroom are situated on the opposite side. Upstairs you will find 2 more bedrooms and another bath. The Emerson also includes a laundry room, a covered porch, a two-car garage, and an optional basement plan offering both practicality and style. With its thoughtful design and functional layout, the Emerson is an ideal home for families seeking a contemporary living space.

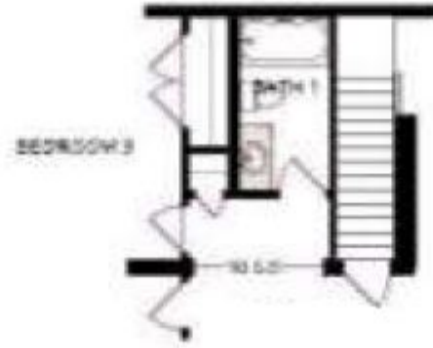
FIRST FLOOR



SUGGESTED SECOND FLOOR



OPTIONAL BASEMENT LAYOUT



YOUR
NEW HOME
CONSULTANT



Hi, I'm , your personal Modular Home Consultant

I would be happy to help you with any questions you may have. You can contact me on my direct number at or email me at .

