

PAISLEY I . CVL-013

Cabin Traditional



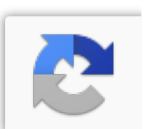
SPECIFICATIONS

SQ. FT.	1441
BEDROOMS:	3
BATHROOMS:	2.5
LEVELS:	1.5

OPTIONAL FEATURES

- Green Certification
- Energy Star

The Paisley I is a stunning house design plan. This home features an open-concept living area, and kitchen. The primary suite is located on the main floor of the house, complete with a walk-in closet and ensuite bathroom. In addition there is a half bath on the main floor. On the upper floor of the house, two additional bedrooms share a bathroom. The Paisley I also has options for a basement. With its stylish exterior and practical layout, the Paisley I is a perfect home for families or retirees who desire both comfort and sophistication.



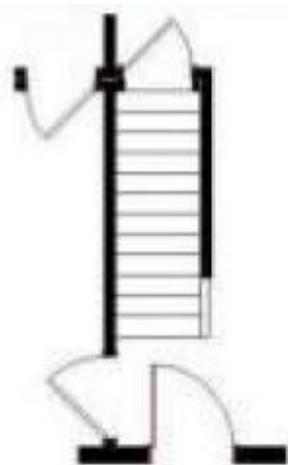
FIRST FLOOR



SUGGESTED SECOND FLOOR



OPTIONAL BASEMENT LAYOUT



YOUR
NEW HOME



Hi, I'm , your personal Modular Home Consultant

I would be happy to help you with any questions you may have. You can

contact me on my direct number at or email me at .

