

HADLEY . CVL-012

Traditional



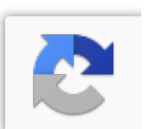
SPECIFICATIONS

SQ. FT.	2352
BEDROOMS:	4
BATHROOMS:	3.5
LEVELS:	2.0

OPTIONAL FEATURES

- Green Certification
- Energy Star

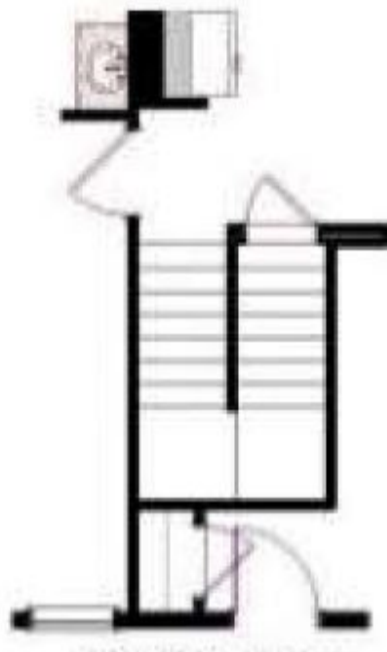
FIRST FLOOR



SECOND FLOOR



OPTIONAL BASEMENT LAYOUT



**YOUR
NEW HOME
CONSULTANT**



Hi, I'm , your personal Modular Home Consultant

I would be happy to help you with any questions you may have. You can contact me on my direct number at or email me at .

