

EVELYN. CVL-001

Traditional



SPECIFICATIONS

SQ. FT.	1232
BEDROOMS:	3
BATHROOMS:	2.0
LEVELS:	2.0

OPTIONAL FEATURES

- ☒ Green Certification
- ☒ Energy Star

The Evelyn is a beautiful and modern home plan that offers both comfort and functionality. This home features 1,232 square feet of living space, with an open-concept layout that maximizes natural light and provides a spacious feel throughout.

As you enter the home, you are greeted with a large living room that flows seamlessly into the dining area and kitchen. The kitchen features ample space for meal prep and storage.

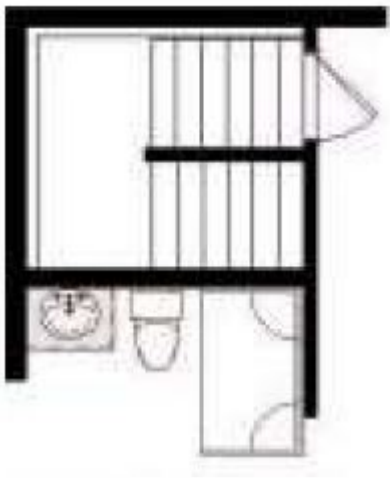
The home includes three bedrooms and two bathrooms, including a spacious master suite with a large walk-in closet and an ensuite bathroom with a dual sink vanity and a large shower. The other two bedrooms share a full bathroom and offer plenty of space for family members or guests.

The Evelyn also includes a utility room with a washer and dryer hook-up and additional storage space. The exterior of the home is finished with durable materials, and features a covered porch perfect for relaxing and enjoying the outdoors

FIRST FLOOR



OPTIONAL BASEMENT LAYOUT



YOUR
NEW HOME
CONSULTANT

Hi, I'm , your personal Modular Home Consultant

I would be happy to help you with any questions you may have. You can contact me on my direct number at or email me at .