

SOUTHAMPTON I. PVW-015

CoastalTraditional



SPECIFICATIONS

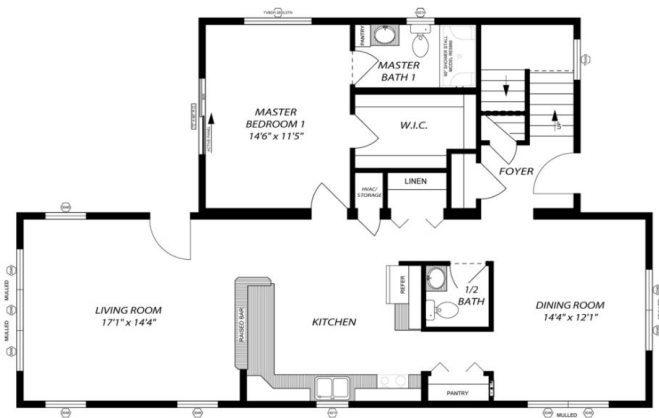
SQ. FT.	2453
BEDROOMS:	5
BATHROOMS:	3.5
LEVELS:	2.0

OPTIONAL FEATURES

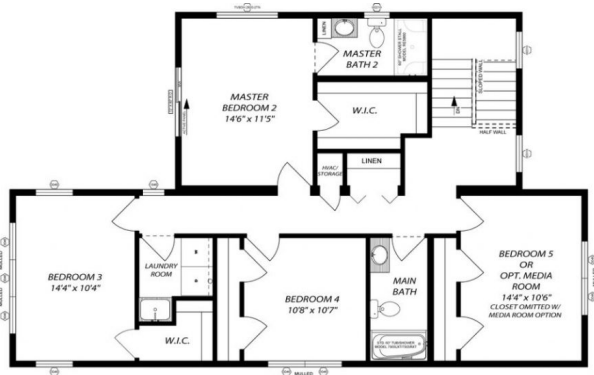
- ☒ Green Certification
- ☒ Energy Star

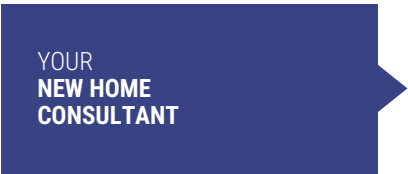
With two master suites (one on each floor) the Southampton is highlighted by its five bedrooms and three and a half bathrooms. Build your custom, multi-level deck, accessible from the living room and both floor master suites. For those special occasions, the Southampton features a formal dining room, convertible to a home office, den or other use.

FIRST FLOOR



SECOND FLOOR





Hi, I'm , your personal Modular Home Consultant

I would be happy to help you with any questions you may have. You can contact me on my direct number at or email me at .