

# YELLOWSTONE. NSP-027

Traditional



### SPECIFICATIONS

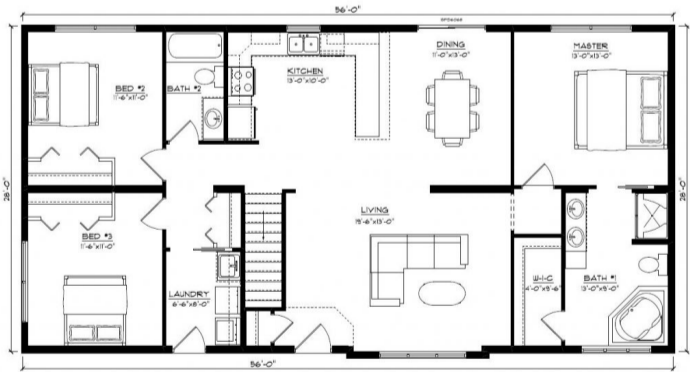
SQ. FT.	1568
BEDROOMS:	3.0
BATHROOMS:	2.0
LEVELS:	1

### OPTIONAL FEATURES

- ☒ Green Certification
- ☒ Energy Star

The living area in our Yellowstone plan consists of generously proportioned kitchen, dining, and lounge areas. A notable feature in the kitchen is the counter-height bar bordering the dining area, offering casual seating for family and guests. This plan is large enough to include a master bedroom with a spacious ensuite including a double vanity, as well as a walk-in closet. With two additional bedrooms, a second bathroom, and the convenience of main floor laundry, this plan is instantly home to anyone!

### FIRST FLOOR



YOUR  
NEW HOME  
CONSULTANT

Hi, I'm , your personal Modular Home Consultant

I would be happy to help you with any questions you may have. You can contact me on my direct number at or email me at .