

# ROANOKE. NSP-019

Traditional



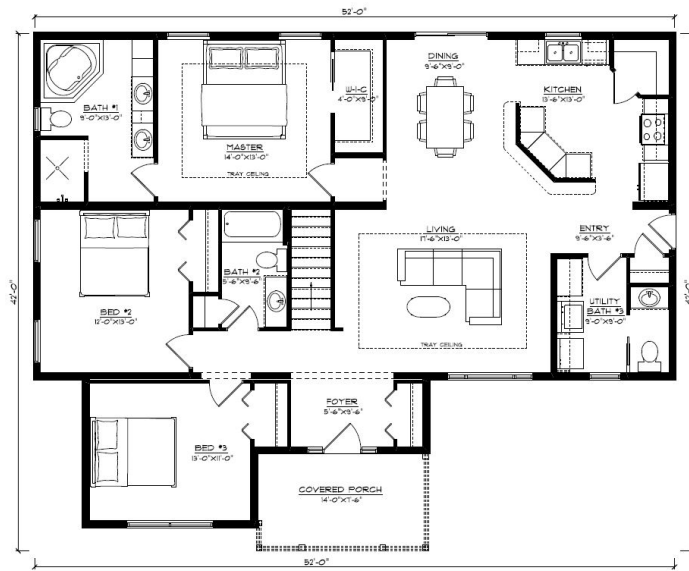
## SPECIFICATIONS

SQ. FT.	1820
BEDROOMS:	3.0
BATHROOMS:	2.5
LEVELS:	1.0

## OPTIONAL FEATURES

- ☒ Green Certification
- ☒ Energy Star

Step from the covered porch through the foyer to a welcoming open great room. This plan has a bit of added character with a 90° tray ceiling in the living area as well as the master bedroom – an opportunity for cozy lighting. A half bath off the living area is an added convenience, with a full bath nestled in the front of the home near the two main bedrooms. The master bedroom is beautiful, with an ensuite featuring a walk-in shower, a double vanity, and a Jacuzzi style bath. Cozy, homey, and spacious – this plan has it all!



YOUR  
NEW HOME  
CONSULTANT

Hi, I'm , your personal Modular Home Consultant

I would be happy to help you with any questions you may have. You can contact me on my direct number at or email me at .