

COLORADO. NSP-003

Traditional



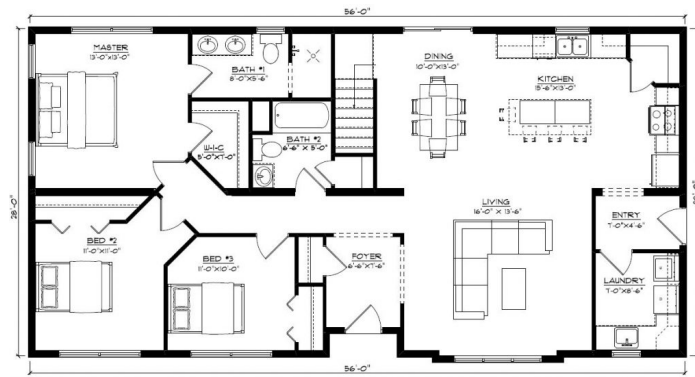
SPECIFICATIONS

SQ. FT.	1568
BEDROOMS:	3.0
BATHROOMS:	2.0
LEVELS:	1.0

OPTIONAL FEATURES

- ☒ Green Certification
- ☒ Energy Star

The Colorado has great curb appeal with an accent bump out and an inset entryway. Step through the front door into an open foyer, which leads to the large living area. The garage entry has the convenience of a mudroom right next to the main floor laundry. Some notable features are the corner pantry and center island in the spacious kitchen, as well as the large master bedroom sporting an ensuite with a double vanity and walk-in shower, as well as a walk-in closet. This plan is open with a touch of luxury – make it your own!



YOUR
NEW HOME
CONSULTANT

Hi, I'm , your personal Modular Home Consultant

I would be happy to help you with any questions you may have. You can contact me on my direct number at or email me at .