

ALBANY. NSP-001

Traditional



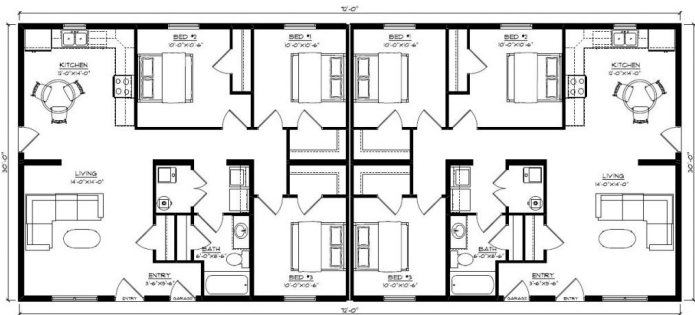
SPECIFICATIONS

SQ. FT.	2160
BEDROOMS:	6
BATHROOMS:	2
LEVELS:	1

OPTIONAL FEATURES

- ☒ Green Certification
- ☒ Energy Star

The Albany is a fabulous double-dwelling option! Each dwelling includes a cozy lounge, a combined kitchen/dining area, a main laundry and bath, and 3 equal-size bedrooms. Enjoy the convenience of both a front and side door entrance, as well as garage entry – you’ll never know you’re in a double dwelling in this well laid out plan!



YOUR
NEW HOME
CONSULTANT

Hi, I'm , your personal Modular Home Consultant

I would be happy to help you with any questions you may have. You can contact me on my direct number at or email me at .