

# SOUTHPORT I. VHS-019

Traditional



## SPECIFICATIONS

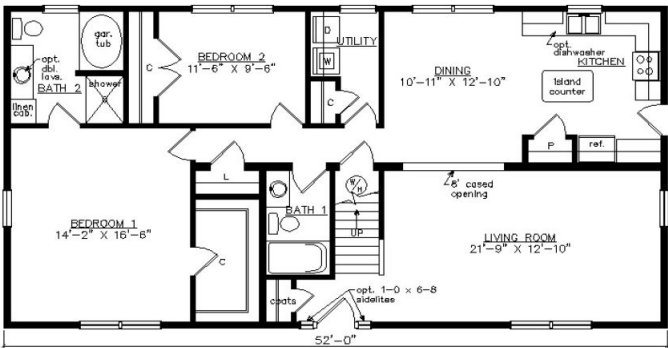
|            |      |
|------------|------|
| SQ. FT.    | 2132 |
| BEDROOMS:  | 4    |
| BATHROOMS: | 3.0  |
| LEVELS:    | 1.5  |

## OPTIONAL FEATURES

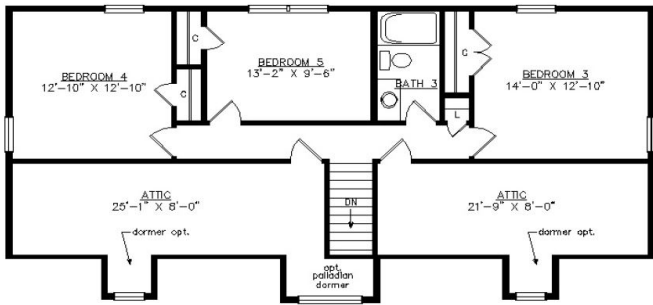
- ☒ Green Certification
- ☒ Energy Star

Shown with optional on-site porch, fanlite door, and dormers

### FIRST FLOOR



### SECOND FLOOR



YOUR  
NEW HOME  
CONSULTANT



Hi, I'm Justin Bryant, your personal Modular Home Consultant

I would be happy to help you with any questions you may have. You can contact me on my direct number at **(877) 410-6334** or email me at [justin.bryant@impresamodular.com](mailto:justin.bryant@impresamodular.com).