

SOUTHAMPTON I. VHS-008

Traditional



SPECIFICATIONS

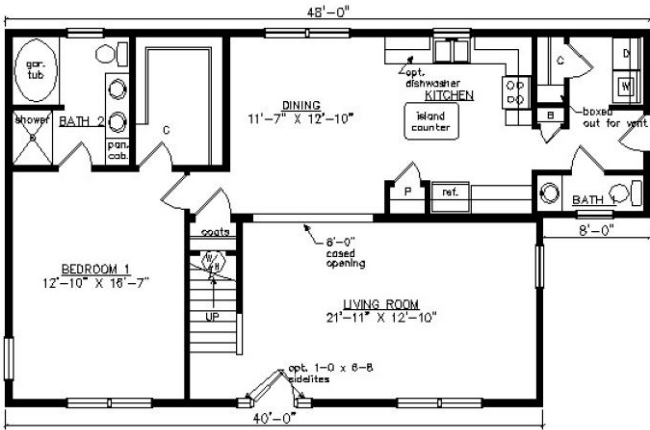
SQ. FT.	1749
BEDROOMS:	3
BATHROOMS:	2.5
LEVELS:	1.5

OPTIONAL FEATURES

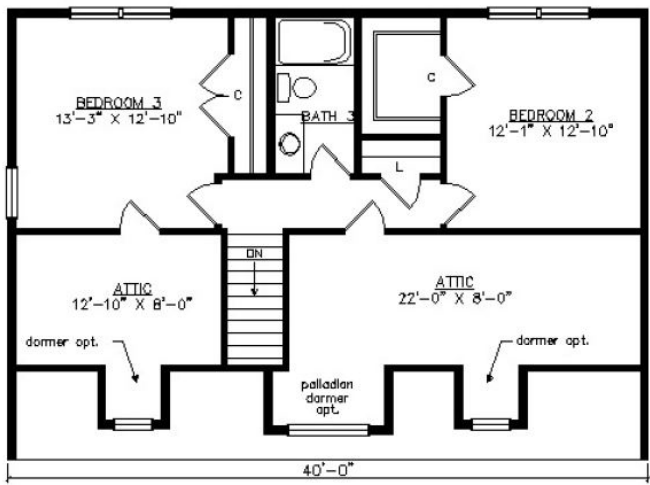
- ☒ Green Certification
- ☒ Energy Star

Shown with optional on-site built porch, fanlite door, door sidelites, and dormers.

FIRST FLOOR



SECOND FLOOR





I would be happy to help you with any questions you may have. You can contact me on my direct number at **(877) 410-6334** or email me at justin.bryant@impresamodular.com.