

SHENANDOAH I. VHS-002

Traditional



SPECIFICATIONS

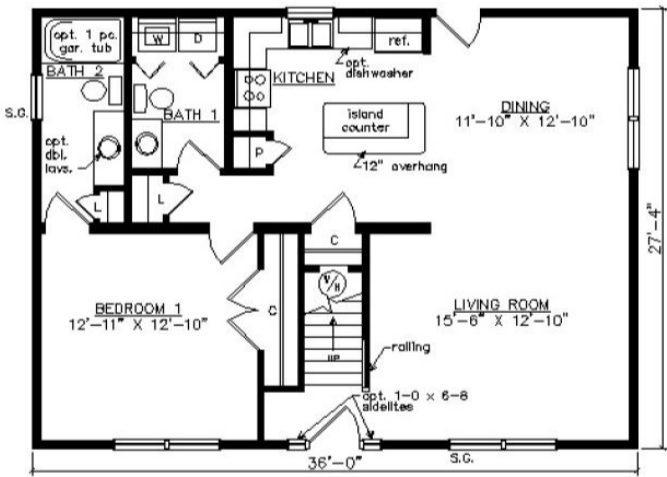
SQ. FT.	1476
BEDROOMS:	3
BATHROOMS:	3.0
LEVELS:	1.5

OPTIONAL FEATURES

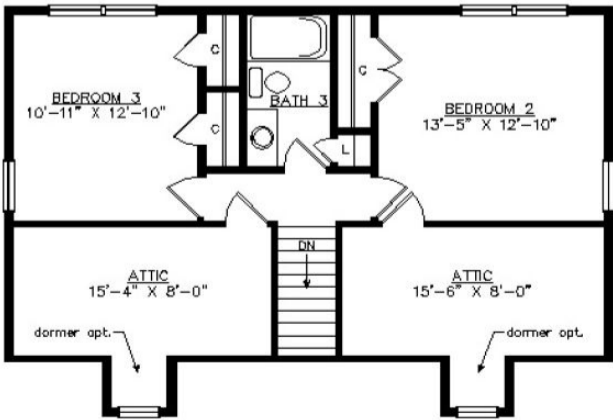
- ☒ Green Certification
- ☒ Energy Star

Shown with optional on-site built porch, fanlite door, and dormers.

FIRST FLOOR



SECOND FLOOR





Hi, I'm , your personal Modular Home Consultant

I would be happy to help you with any questions you may have. You can contact me on my direct number at or email me at .